

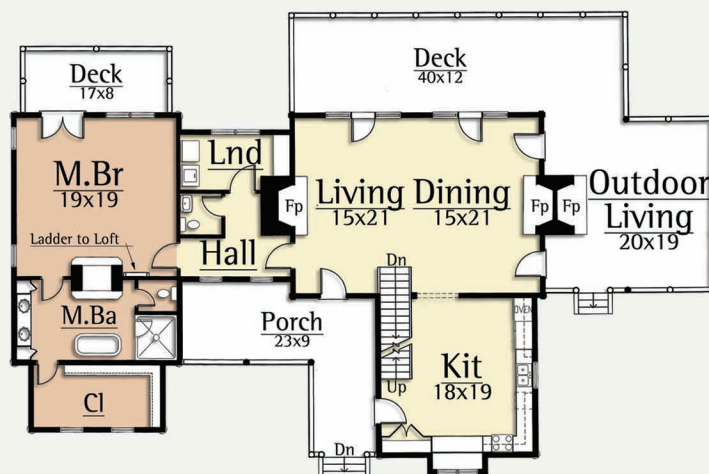
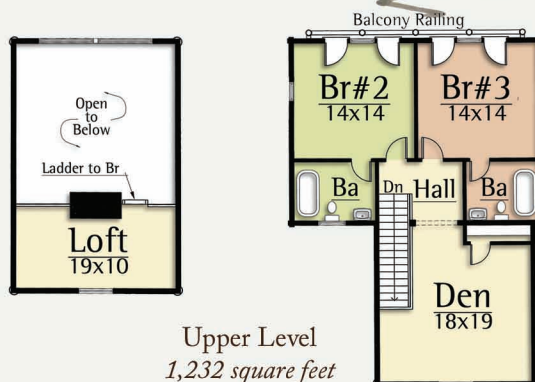


CAROLINA

3,229 total square feet

The Carolina territory was named in honor of Charles the First. For a twenty-year period, 1692-1712, the pioneer colonies of North and South Carolina existed as one unit of government.

The Carolina by MossCreek captures this same pioneer spirit with 3 bedrooms, 3-1/2 baths, including a master on the main level. A large Great Room with exposed timber trusses and an open Kitchen / Dining Room complete a dramatic interior. Exterior timber and Shingle detailing complete the feel of this modern pioneer camp.



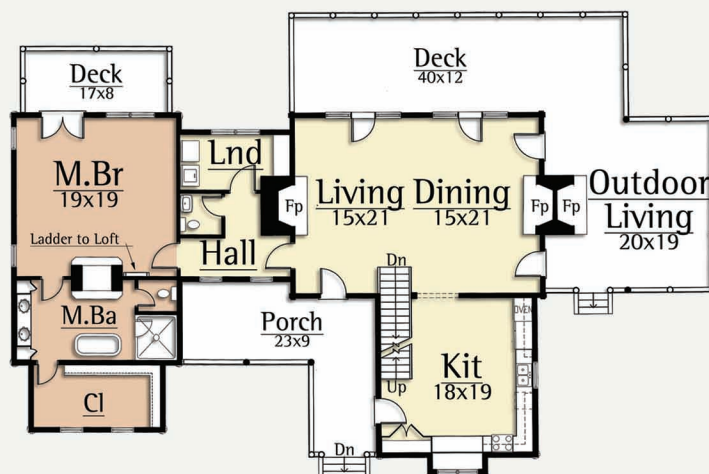
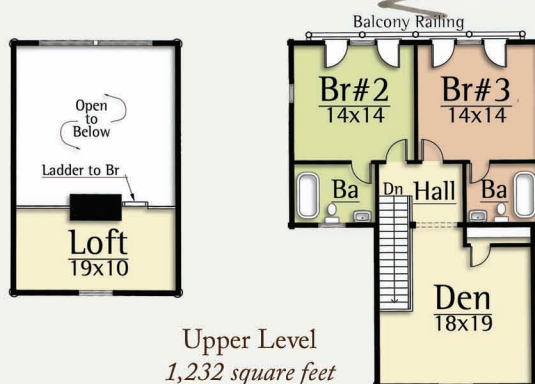


CAROLINA

3,229 total square feet

The Carolina territory was named in honor of Charles the First. For a twenty-year period, 1692-1712, the pioneer colonies of North and South Carolina existed as one unit of government.

The Carolina by MossCreek captures this same pioneer spirit with 3 bedrooms, 3-1/2 baths, including a master on the main level. A large Great Room with exposed timber trusses and an open Kitchen / Dining Room complete a dramatic interior. Exterior timber and Shingle detailing complete the feel of this modern pioneer camp.



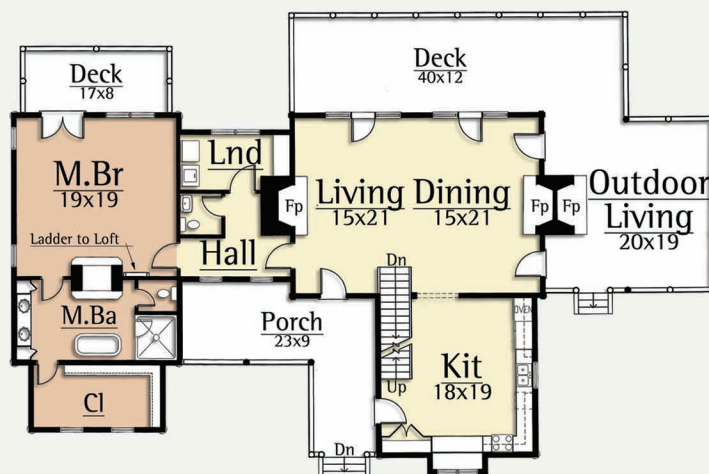
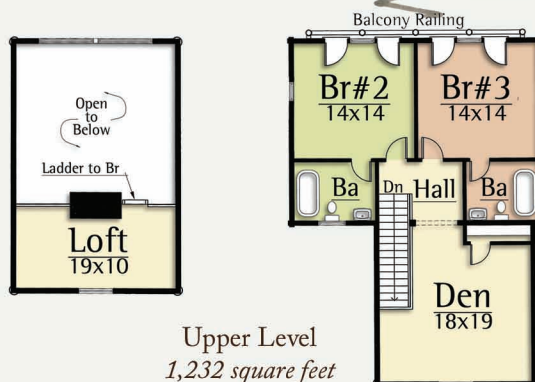


CAROLINA

3,229 total square feet

The Carolina territory was named in honor of Charles the First. For a twenty-year period, 1692-1712, the pioneer colonies of North and South Carolina existed as one unit of government.

The Carolina by MossCreek captures this same pioneer spirit with 3 bedrooms, 3-1/2 baths, including a master on the main level. A large Great Room with exposed timber trusses and an open Kitchen / Dining Room complete a dramatic interior. Exterior timber and Shingle detailing complete the feel of this modern pioneer camp.



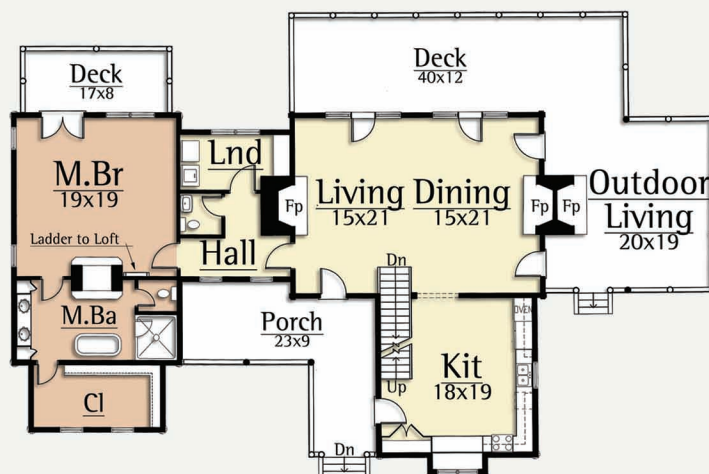
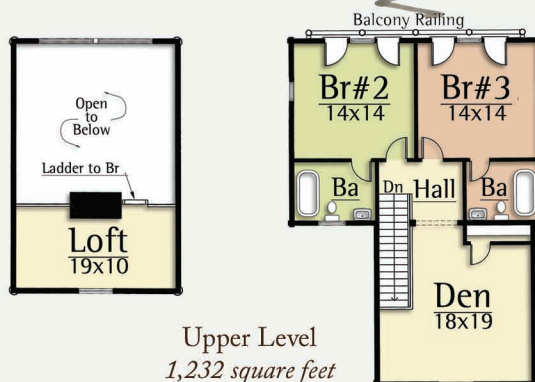


CAROLINA

3,229 total square feet

The Carolina territory was named in honor of Charles the First. For a twenty-year period, 1692-1712, the pioneer colonies of North and South Carolina existed as one unit of government.

The Carolina by MossCreek captures this same pioneer spirit with 3 bedrooms, 3-1/2 baths, including a master on the main level. A large Great Room with exposed timber trusses and an open Kitchen / Dining Room complete a dramatic interior. Exterior timber and Shingle detailing complete the feel of this modern pioneer camp.



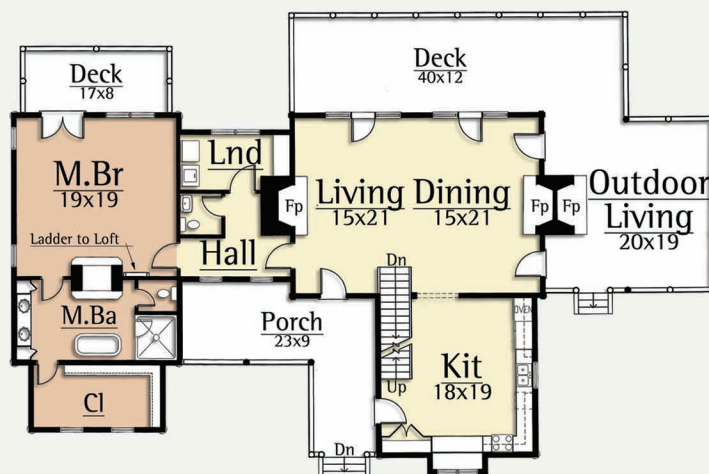
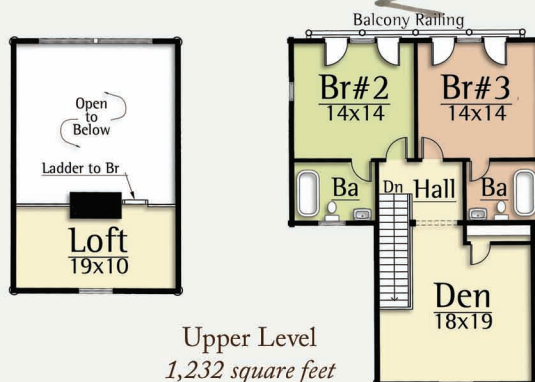


CAROLINA

3,229 total square feet

The Carolina territory was named in honor of Charles the First. For a twenty-year period, 1692-1712, the pioneer colonies of North and South Carolina existed as one unit of government.

The Carolina by MossCreek captures this same pioneer spirit with 3 bedrooms, 3-1/2 baths, including a master on the main level. A large Great Room with exposed timber trusses and an open Kitchen / Dining Room complete a dramatic interior. Exterior timber and Shingle detailing complete the feel of this modern pioneer camp.



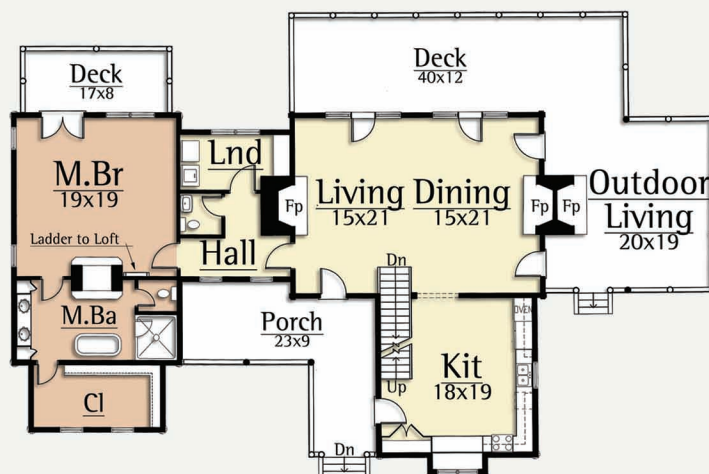
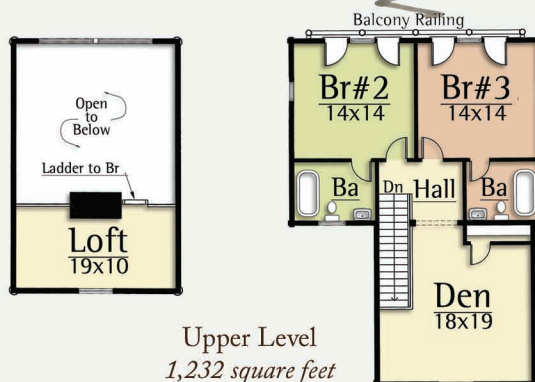


CAROLINA

3,229 total square feet

The Carolina territory was named in honor of Charles the First. For a twenty-year period, 1692-1712, the pioneer colonies of North and South Carolina existed as one unit of government.

The Carolina by MossCreek captures this same pioneer spirit with 3 bedrooms, 3-1/2 baths, including a master on the main level. A large Great Room with exposed timber trusses and an open Kitchen / Dining Room complete a dramatic interior. Exterior timber and Shingle detailing complete the feel of this modern pioneer camp.





CAROLINA

3,229 total square feet

The Carolina territory was named in honor of Charles the First. For a twenty-year period, 1692-1712, the pioneer colonies of North and South Carolina existed as one unit of government.

The Carolina by MossCreek captures this same pioneer spirit with 3 bedrooms, 3-1/2 baths, including a master on the main level. A large Great Room with exposed timber trusses and an open Kitchen / Dining Room complete a dramatic interior. Exterior timber and Shingle detailing complete the feel of this modern pioneer camp.

