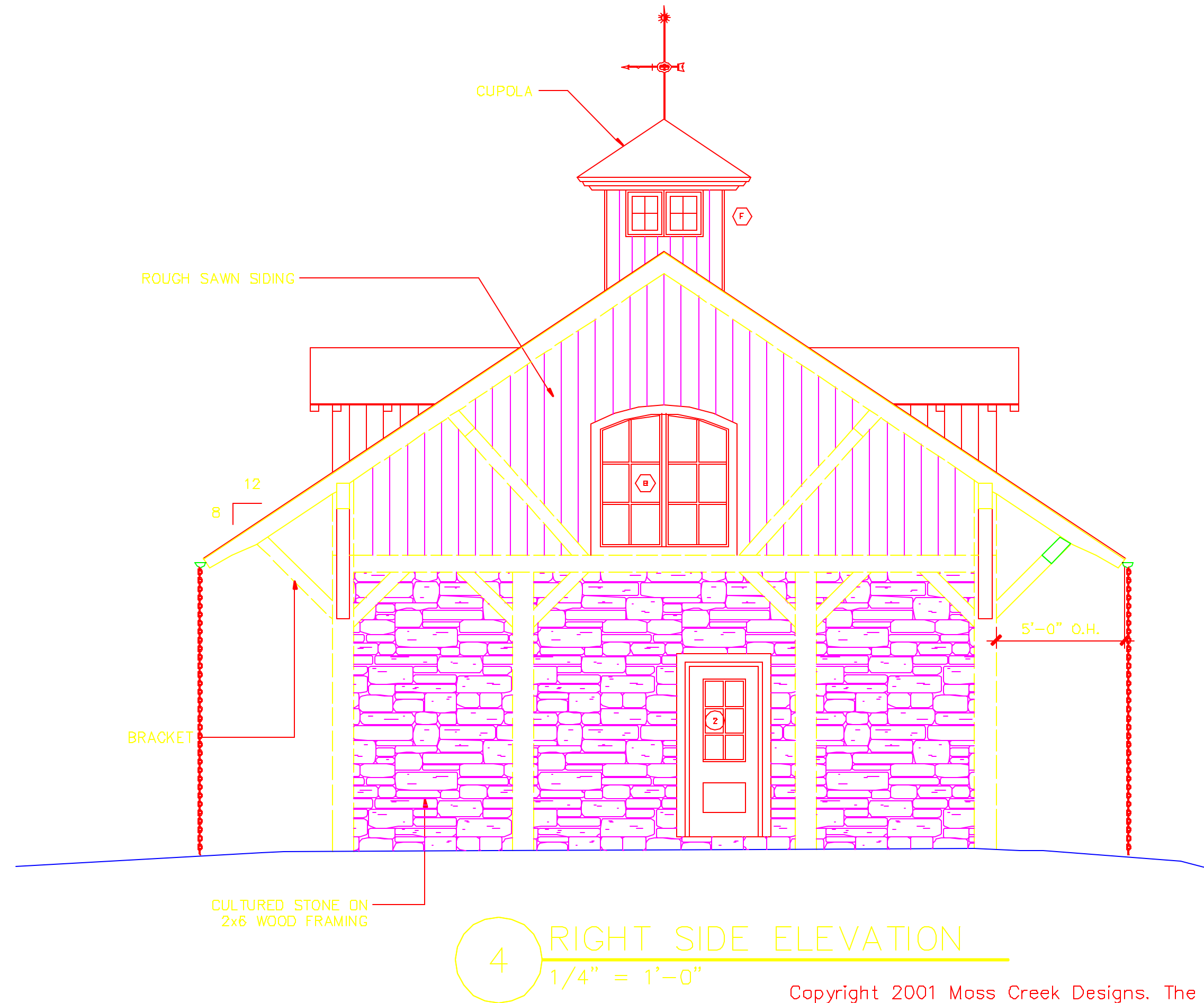
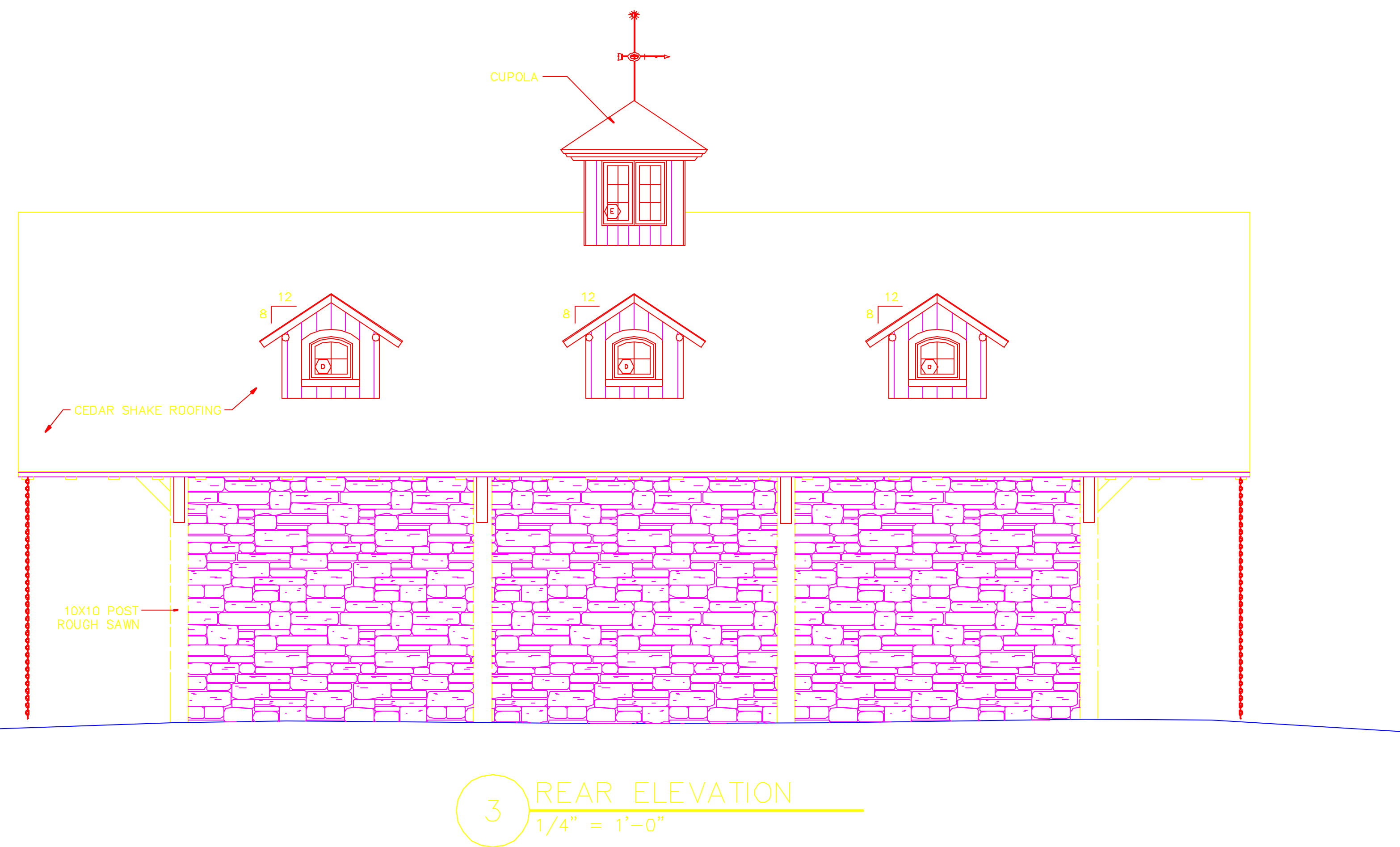
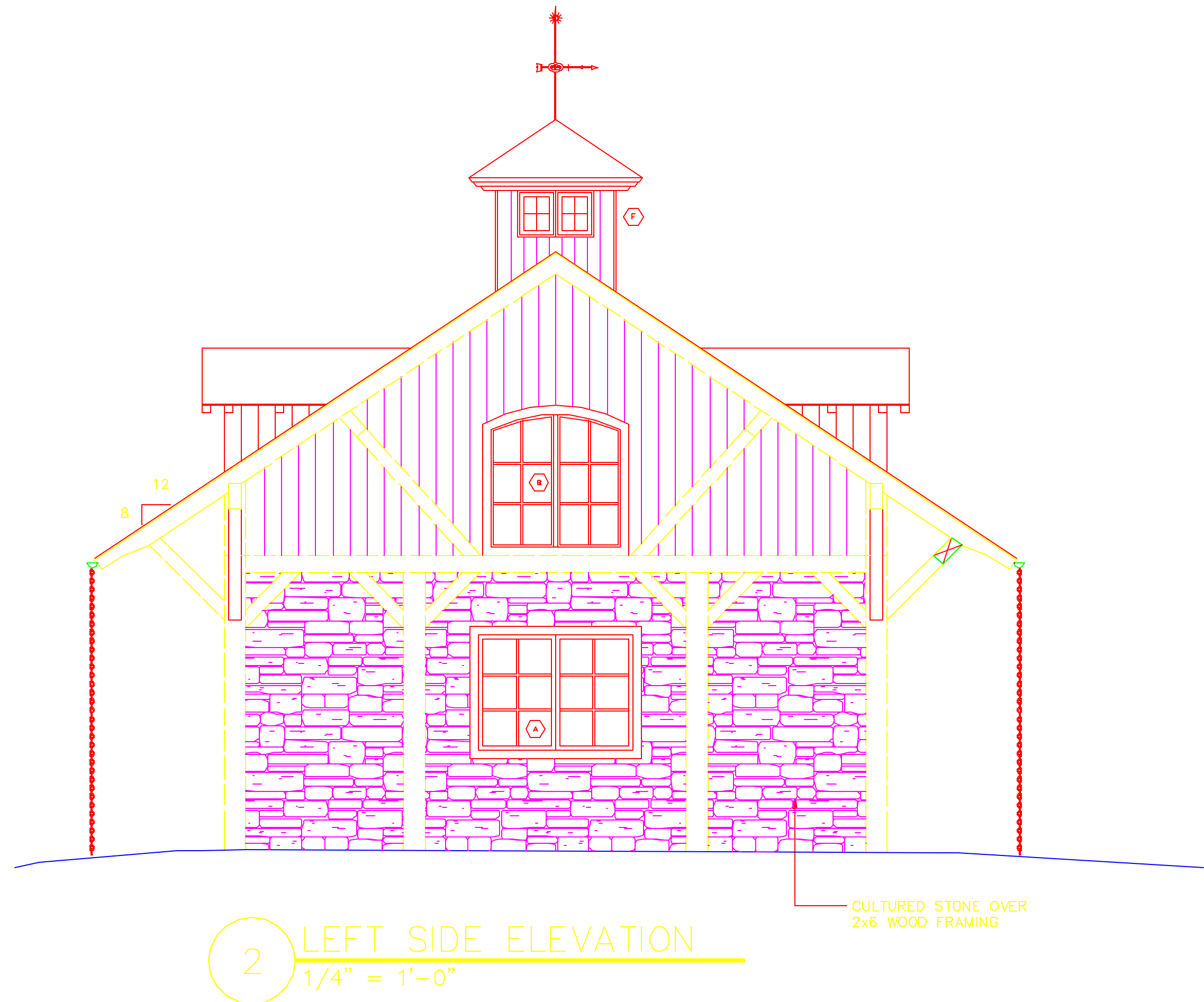
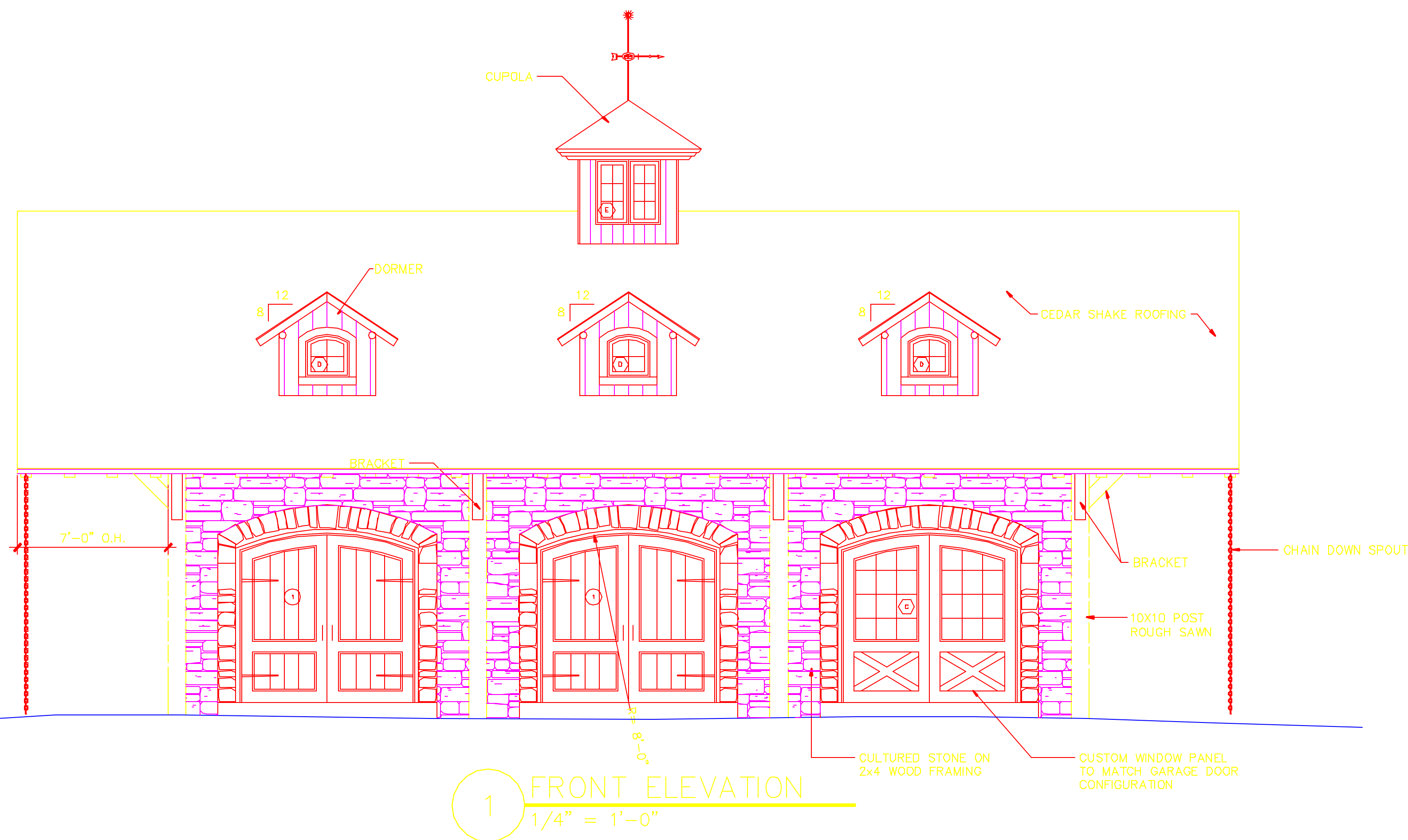


Copyright 2001 Moss Creek Designs. The use of this document and the log home design herein is strictly controlled by US Copyright law. This document may not be copied nor may the log home design be copied, emulated, or referenced by either an individual or a log home company without prior written approval by MossCreek Designs. All violations will be prosecuted to the fullest extent of the law with a minimum of a \$100,000 per incident to both the consumer and the log home company.



Copyright 2001 Moss Creek Designs. The use of this document and the log home design herein is strictly controlled by US Copyright law. This document may not be copied nor may the log home design be copied, emulated, or referenced by either an individual or a log home company without prior written approval by MossCreek Designs. All violations will be prosecuted to the fullest extent of the law with a minimum of a \$100,000 per incident to both the consumer and the log home company.

Revision no.

Project No. 0114_02

Cad File 011402A200

Drawn TAH

Checked AH

Date 09-20-01

Scale 1/4"=1'-0"

Title/No.

ELEVATIONS

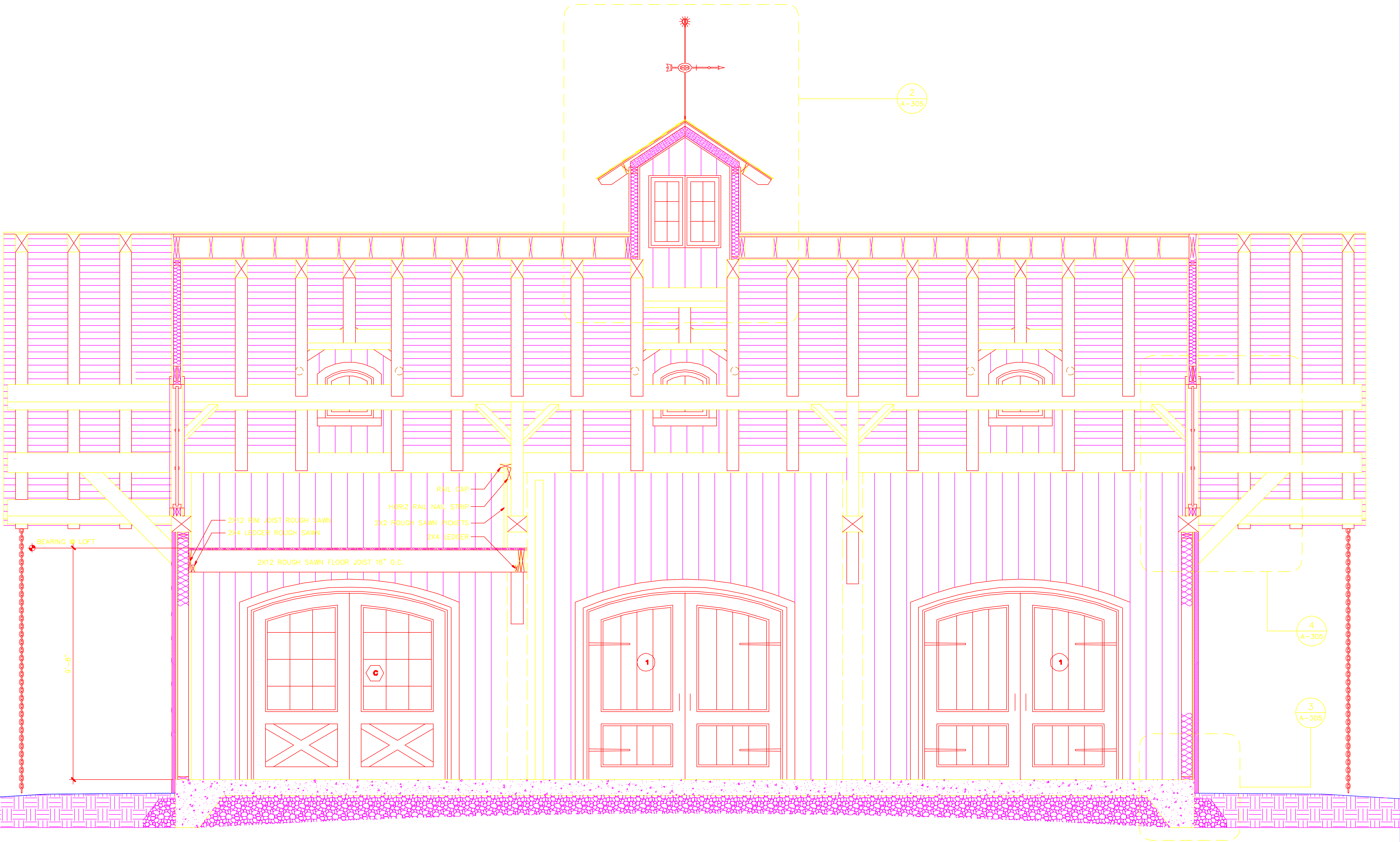
A200

LAKE GLENNVILLE
NORTH CAROLINA

Copyright 2001 Moss Creek Designs. The use of this document and the log home design herein is strictly controlled by US Copyright law. This document may not be copied nor may the log home design be copied, emulated, or referenced by either an individual or a log home company without prior written approval by MossCreek Designs. All violations will be prosecuted to the fullest extent of the law with a minimum of a \$100,000 per incident to both the consumer and the log home company.

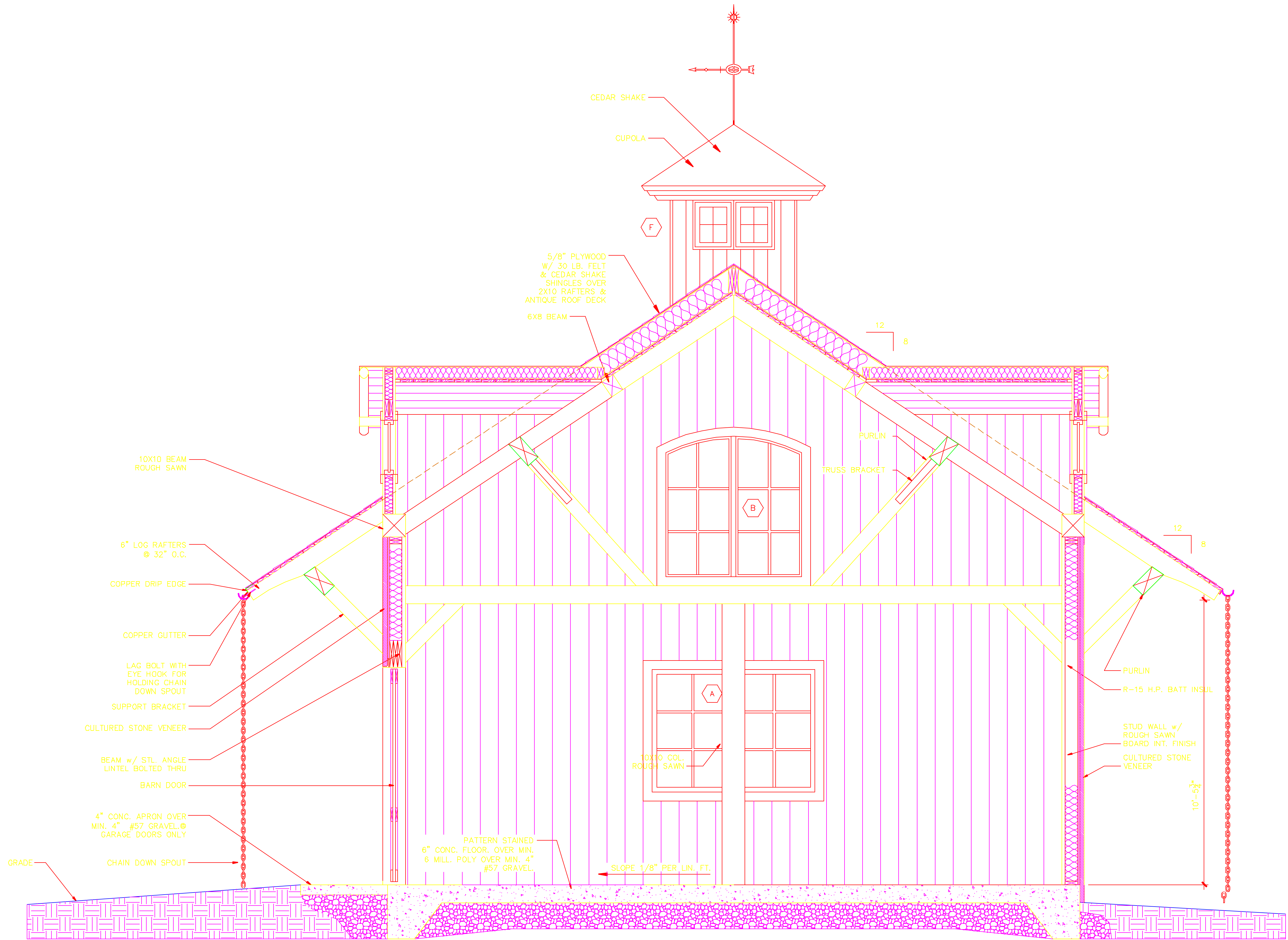
Revision no.	

Project No.	0114_02
Doc File	011402A301
Drawn	TAH
Checked	AH
Date	09-20-01
Scale	1/2"=1'-0"
Title/No.	



1 BUILDING SECTION
1/2" = 1'-0"

Copyright 2001 Moss Creek Designs. The use of this document and the log home design herein is strictly controlled by US Copyright law. This document may not be copied nor may the log home design be copied, emulated, or referenced by either an individual or a log home company without prior written approval by MossCreek Designs. All violations will be prosecuted to the fullest extent of the law with a minimum of a \$100,000 per incident to both the consumer and the log home company.



1 BUILDING SECTION
1/2" = 1'-0"

Copyright 2001 Moss Creek Designs. The use of this document and the log home design herein is strictly controlled by US Copyright law. This document may not be copied nor may the log home design be copied, emulated, or referenced by either an individual or a log home company without prior written approval by MossCreek Designs. All violations will be prosecuted to the fullest extent of the law with a minimum of a \$100,000 per incident to both the consumer and the log home company.

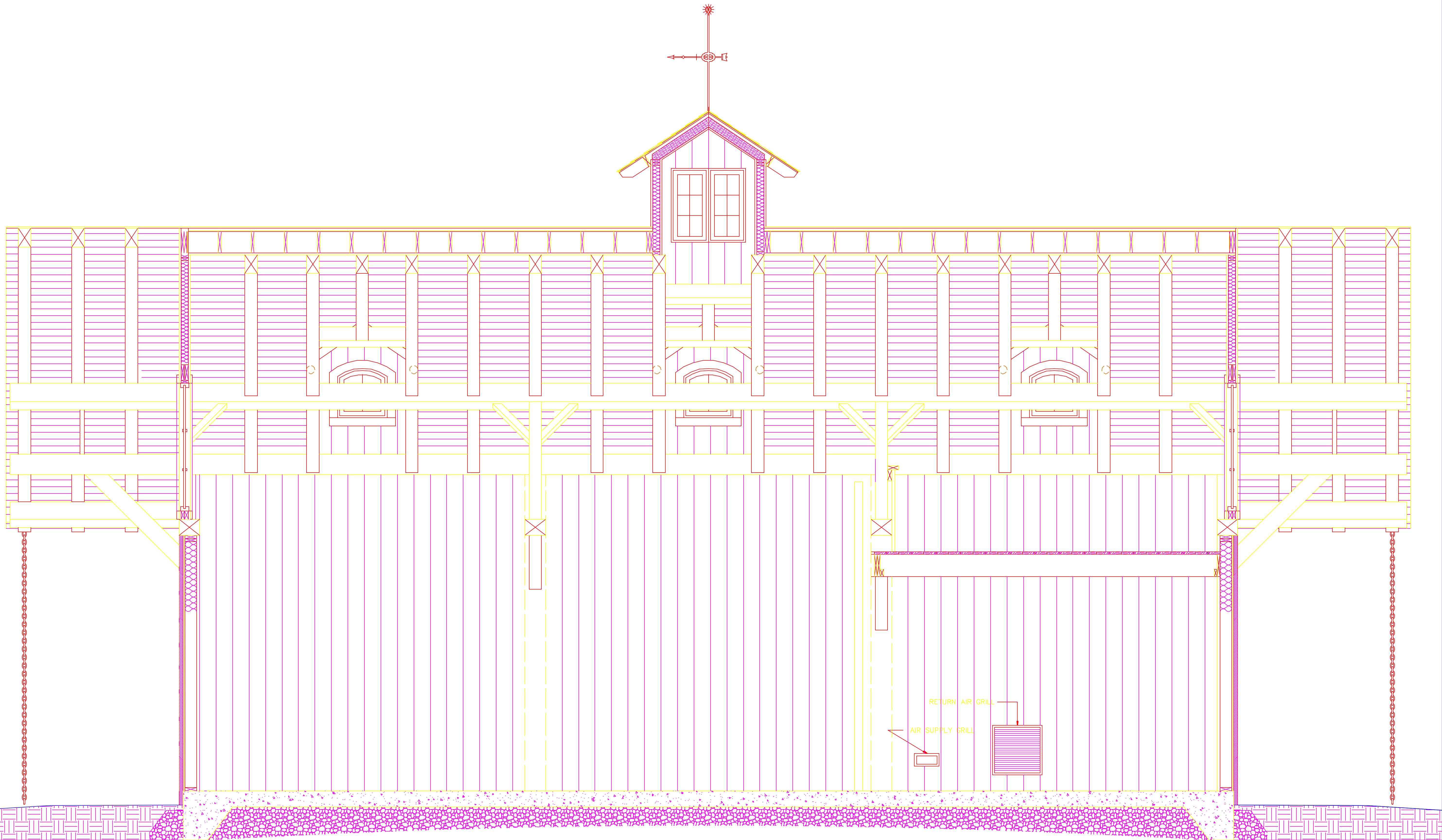
Revision no.	
Project No.	0114_02
Cad File	011402A302
Drawn	TAH
Checked	AH
Date	09-20-01
Scale	1/2"=1'-0"
Title/No.	

BUILDING
SECTION

A302

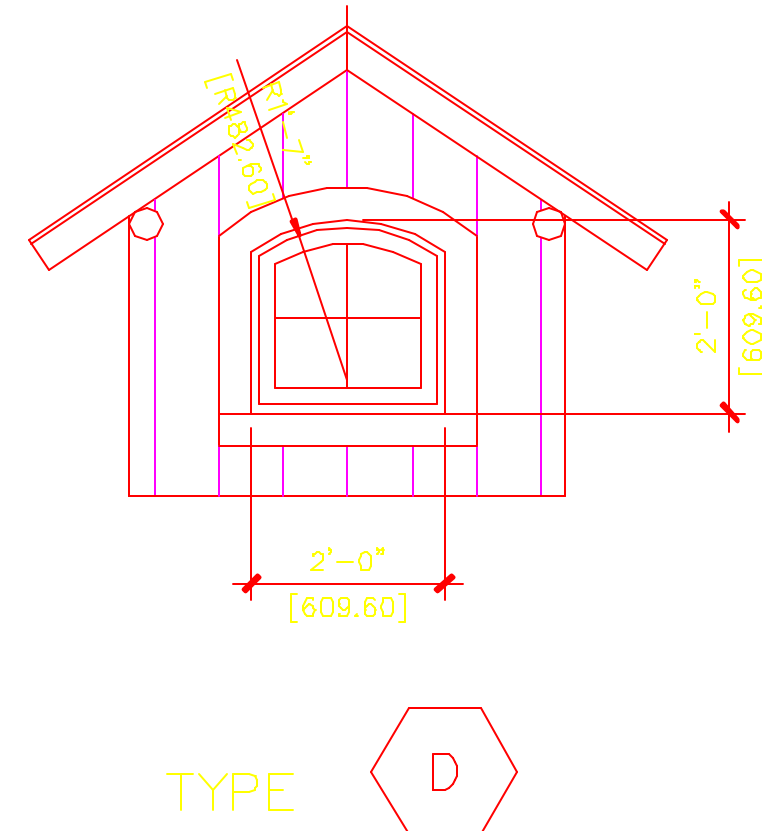
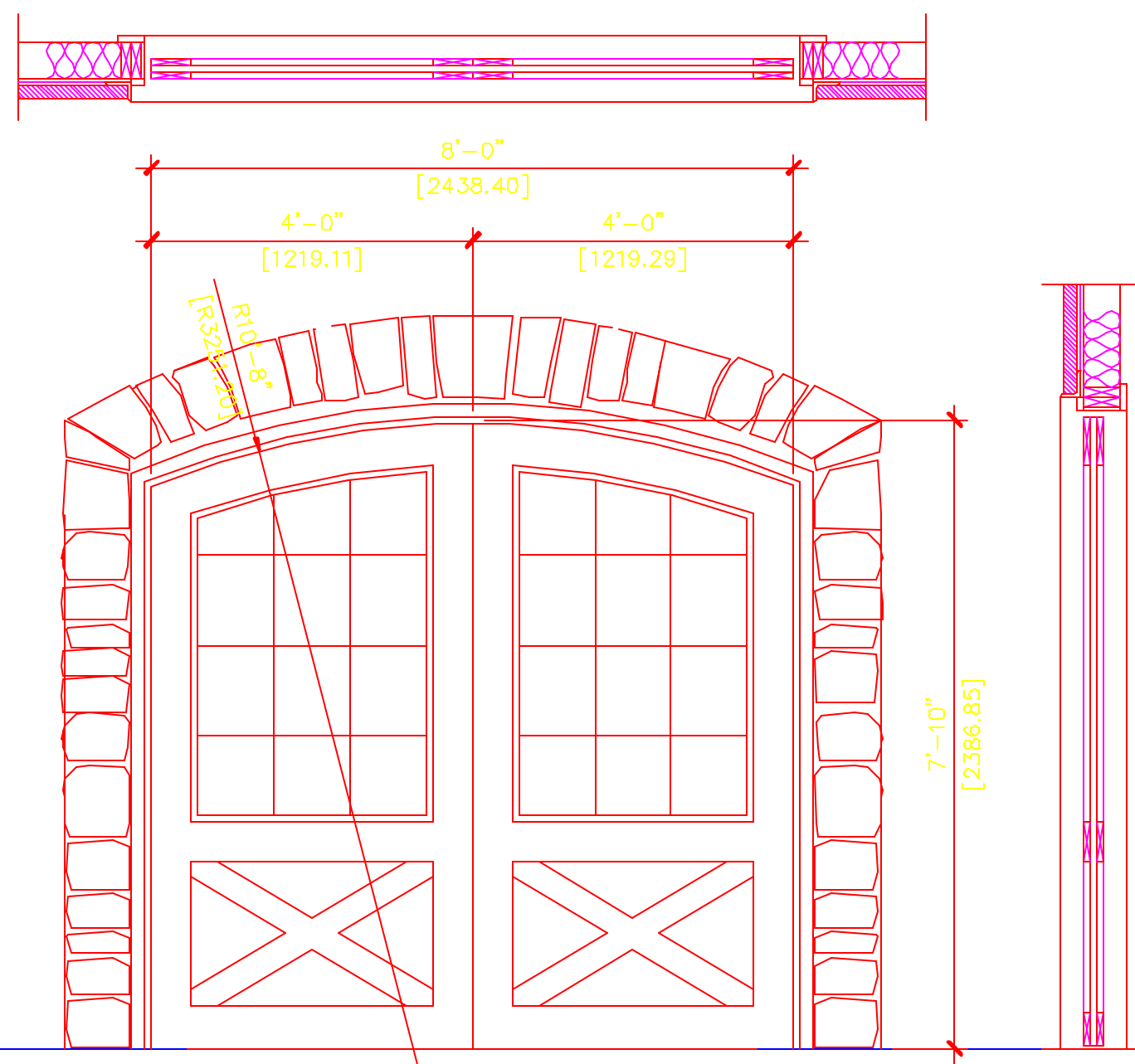
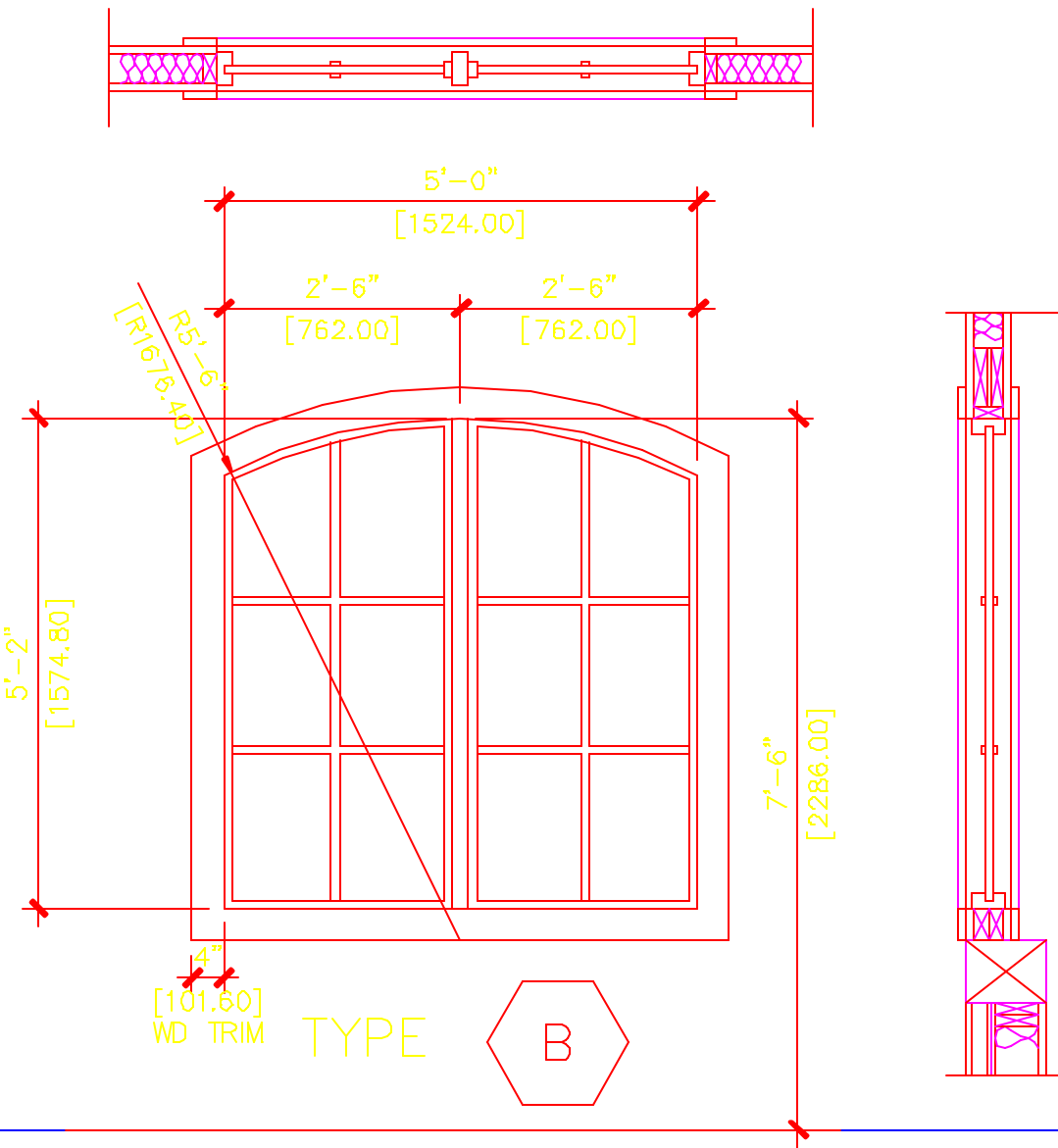
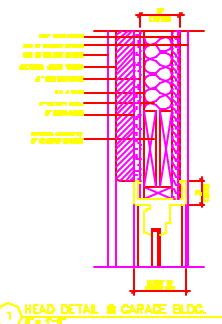
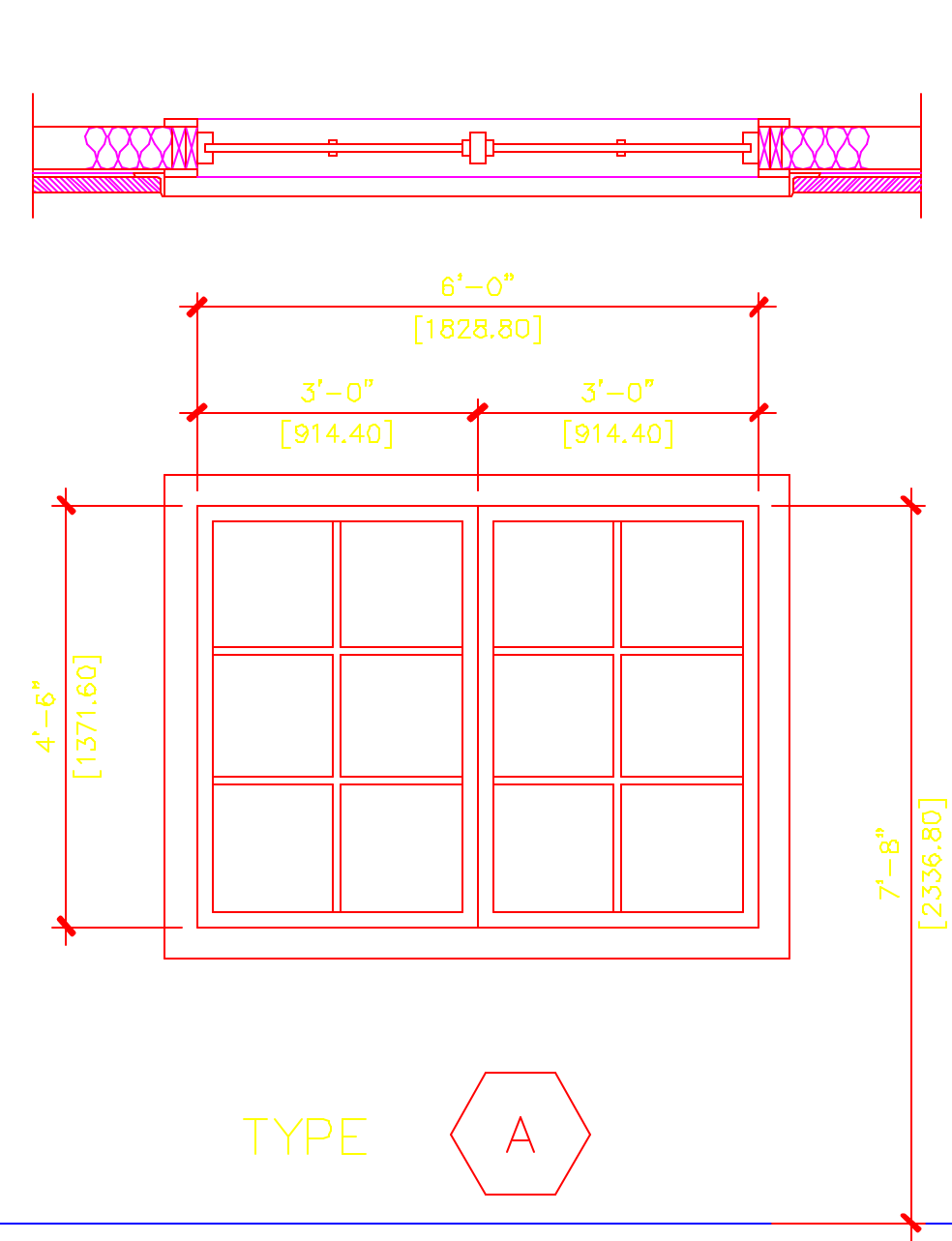
Revision no.	

Project No.	0114_02
Doc File	011402A303
Drawn	TAH
Checked	AH
Date	09-20-01
Scale	1/2"=1'-0"
Title/No.	



1 BUILDING SECTION
1/2" = 1'-0"

Copyright 2001 Moss Creek Designs. The use of this document and the log home design herein is strictly controlled by US Copyright law. This document may not be copied nor may the log home design be copied, emulated, or referenced by either an individual or a log home company without prior written approval by MossCreek Designs. All violations will be prosecuted to the fullest extent of the law with a minimum of a \$100,000 per incident to both the consumer and the log home company.



1 WINDOW ELEVATION
1/2" = 1'-0"

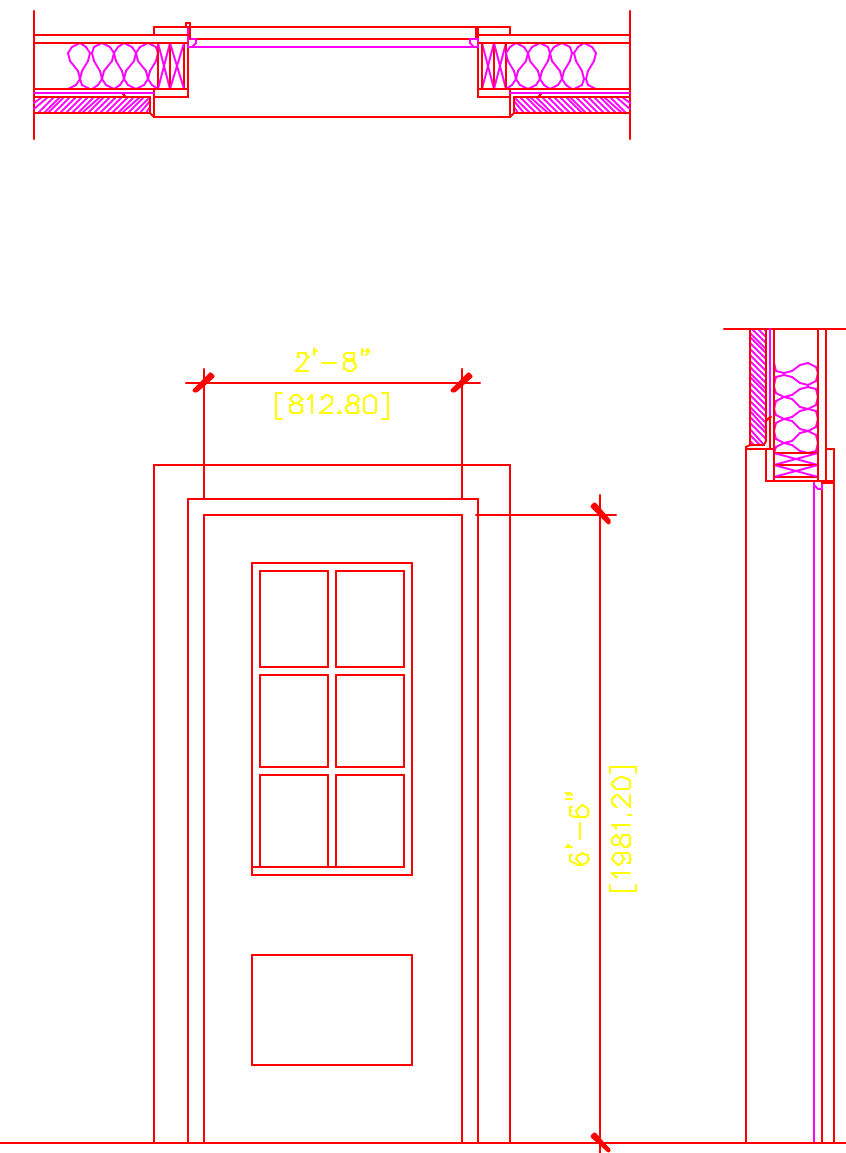
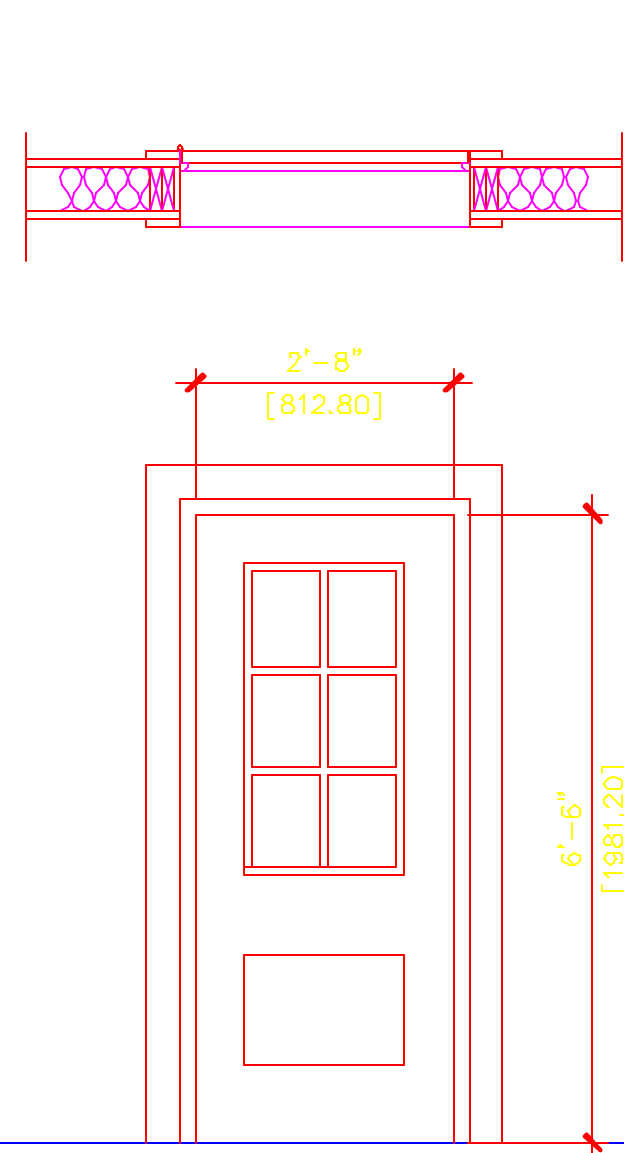
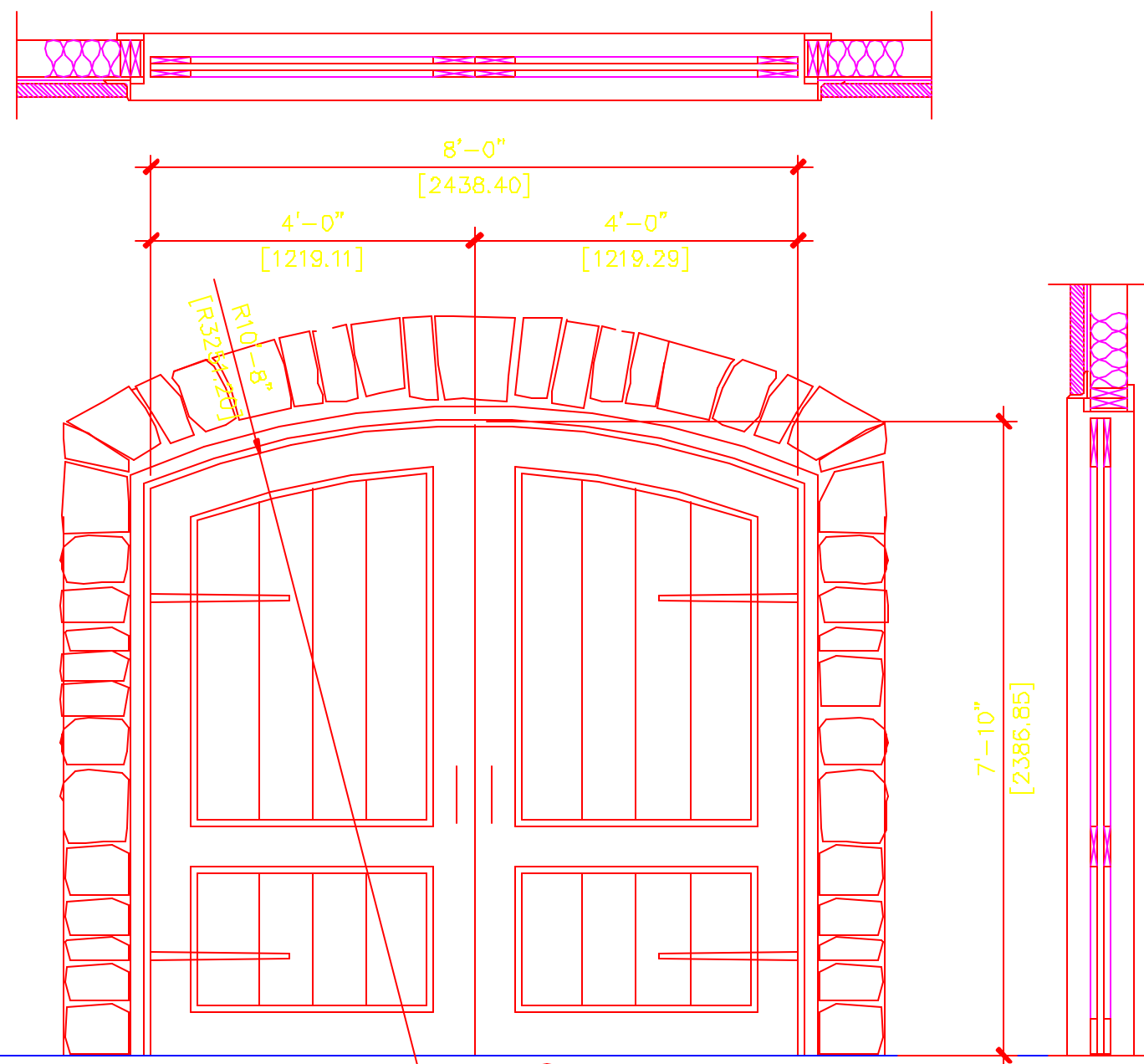
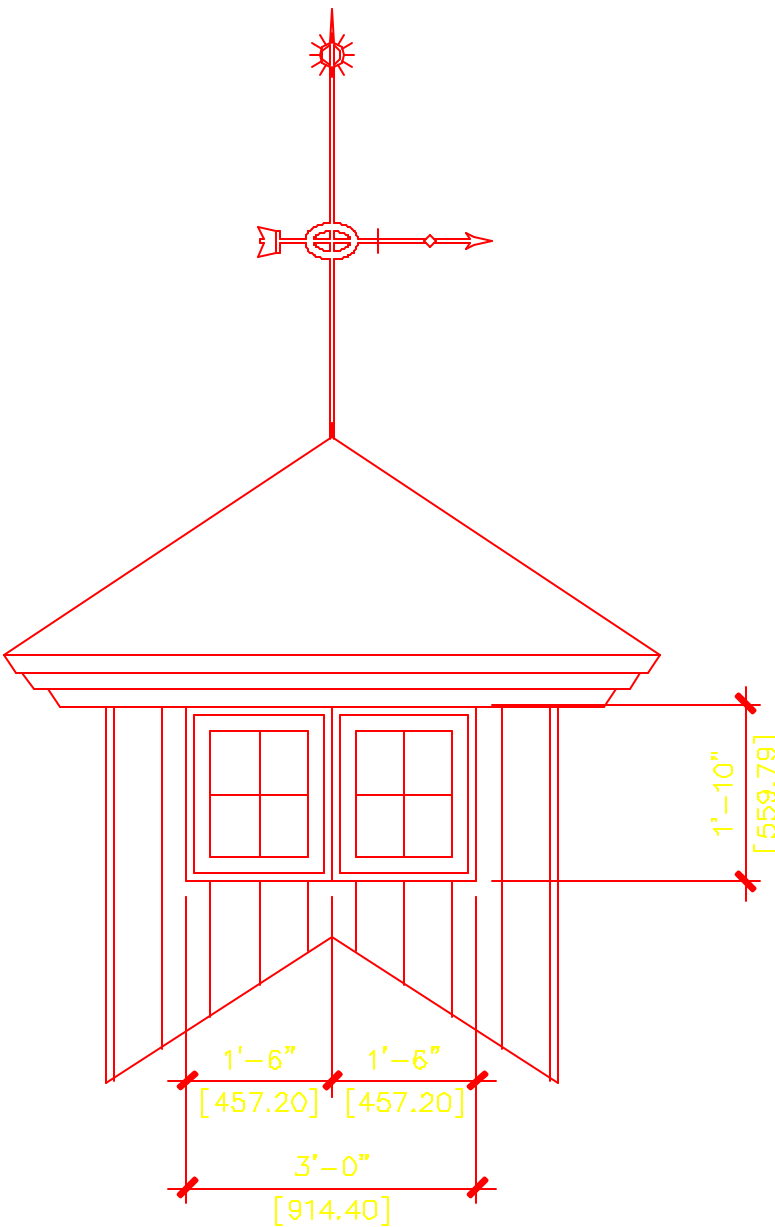
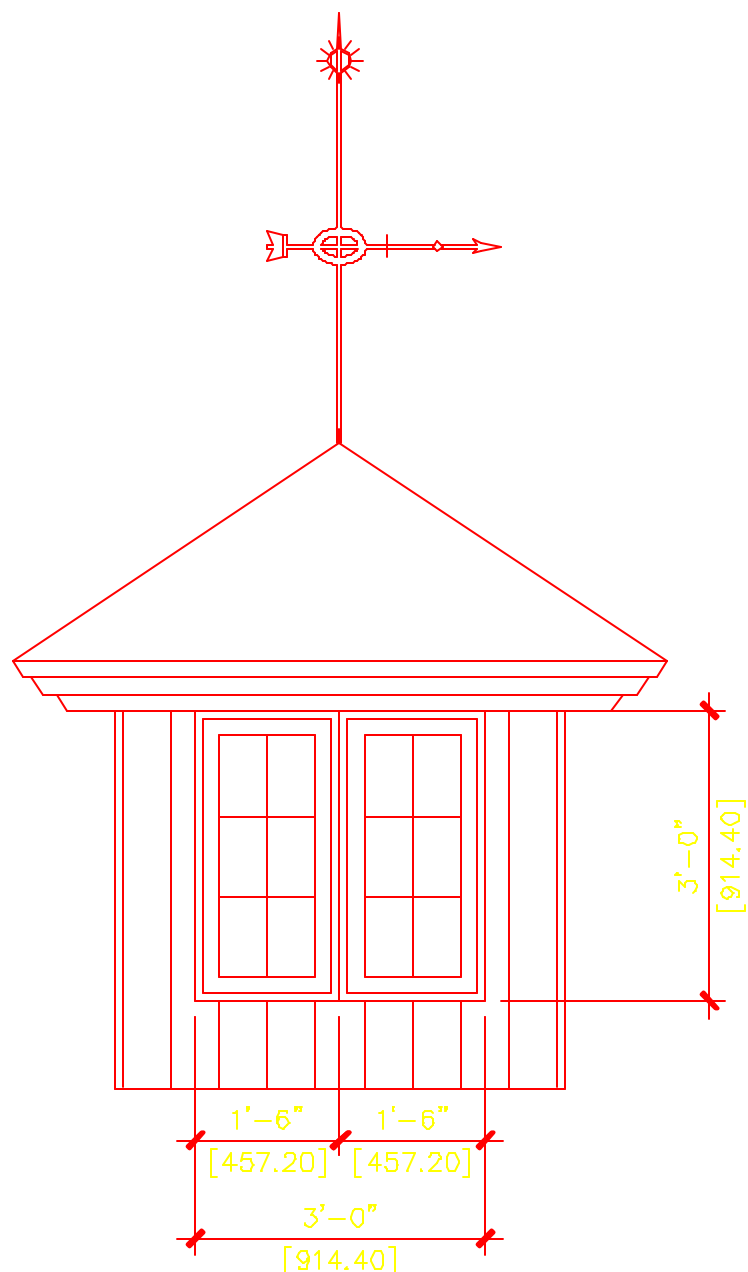
2 WINDOW ELEVATION
1/2" = 1'-0"

3 WINDOW ELEVATION
1/2" = 1'-0"

4 WINDOW ELEVATION
1/2" = 1'-0"

NOTE:
ALL DOORS AND WINDOWS
TO BE FABRICATED
IN GERMANY

NOTE:
- ALL WINDOWS DIMENSIONS ARE TO OUTSIDE
OF FRAME
- ALL DOOR DIMENSIONS ARE TO OUTSIDE
OF DOOR PANEL
- MANUFACTURER TO SUBMIT SHOP
DRAWINGS PRIOR TO FABRICATION



5 WINDOW ELEVATION
1/2" = 1'-0"

6 WINDOW ELEVATION
1/2" = 1'-0"

7 DOOR ELEVATION
1/2" = 1'-0"

8 DOOR ELEVATION
1/2" = 1'-0"

9 DOOR ELEVATION
1/2" = 1'-0"

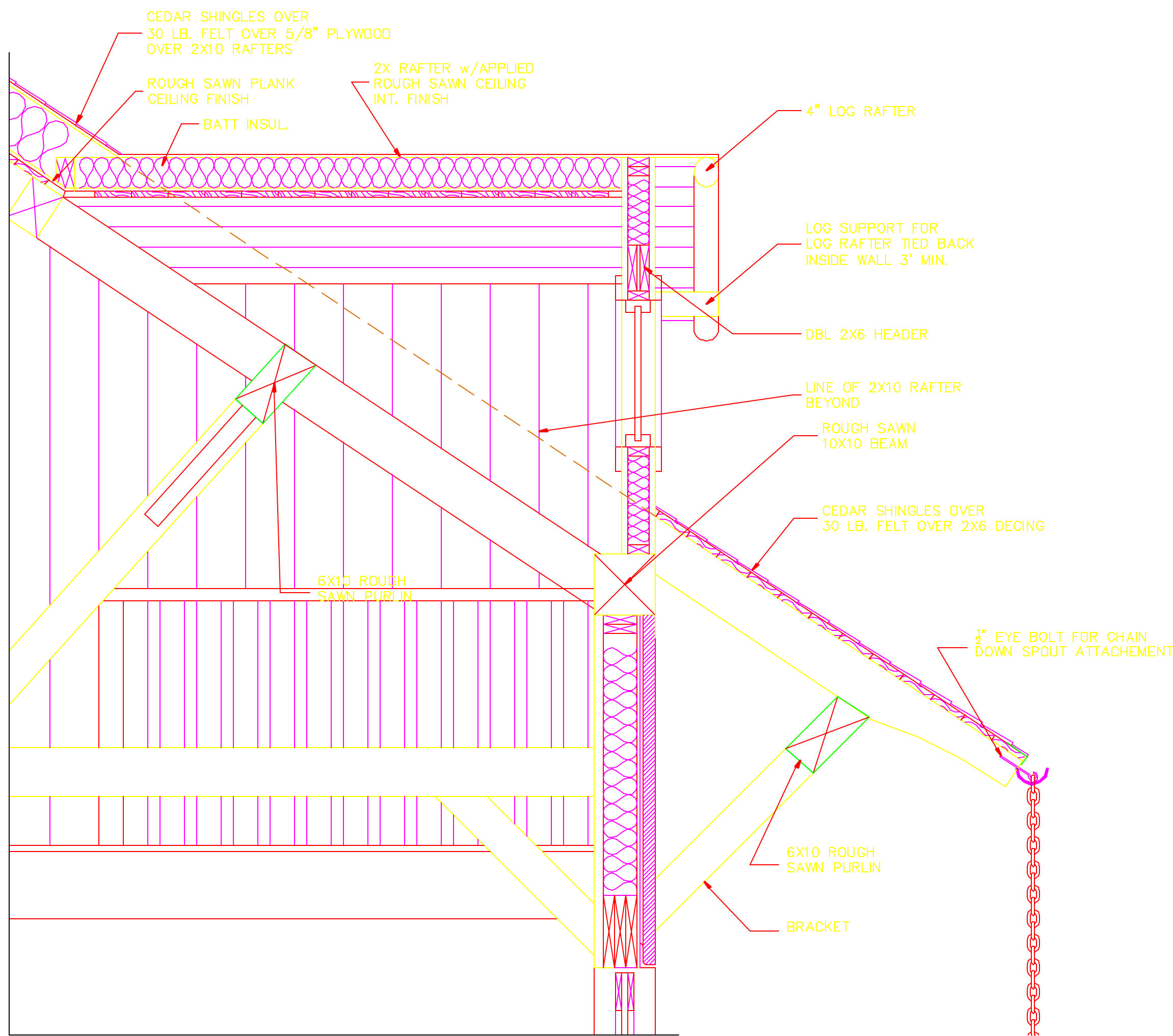
Copyright 2001 Moss Creek Designs. The use of this document and the log home design herein is strictly controlled by US Copyright law. This document may not be copied nor may the log home design be copied, emulated, or referenced by either an individual or a log home company without prior written approval by MossCreek Designs. All violations will be prosecuted to the fullest extent of the law with a minimum of a \$100,000 per incident to both the consumer and the log home company.

Revision no.

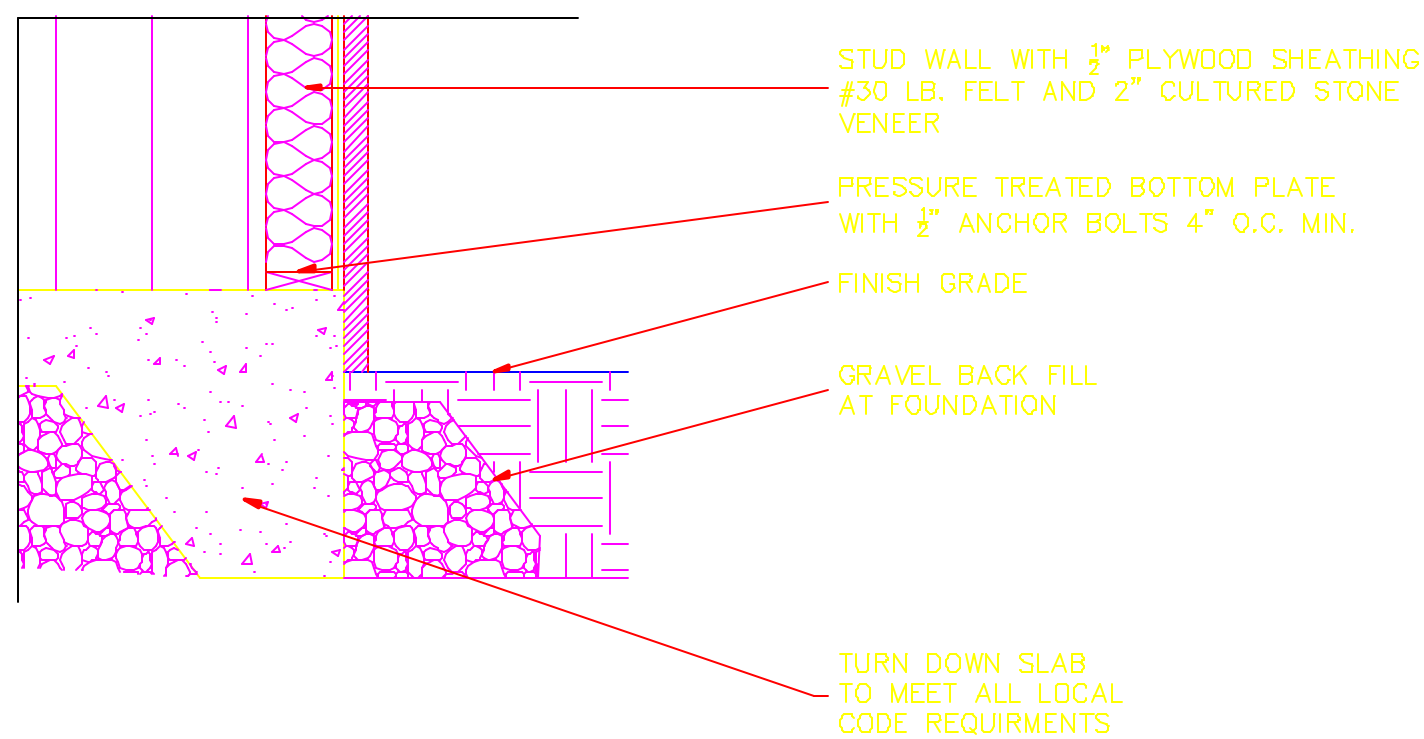
Project No.	0114_02
Cad File	011402A304
Drawn	TAH
Checked	AH
Date	09-20-01
Scale	1/2"=1'-0"
Title/No.	

WINDOW &
DOOR
DETAILS

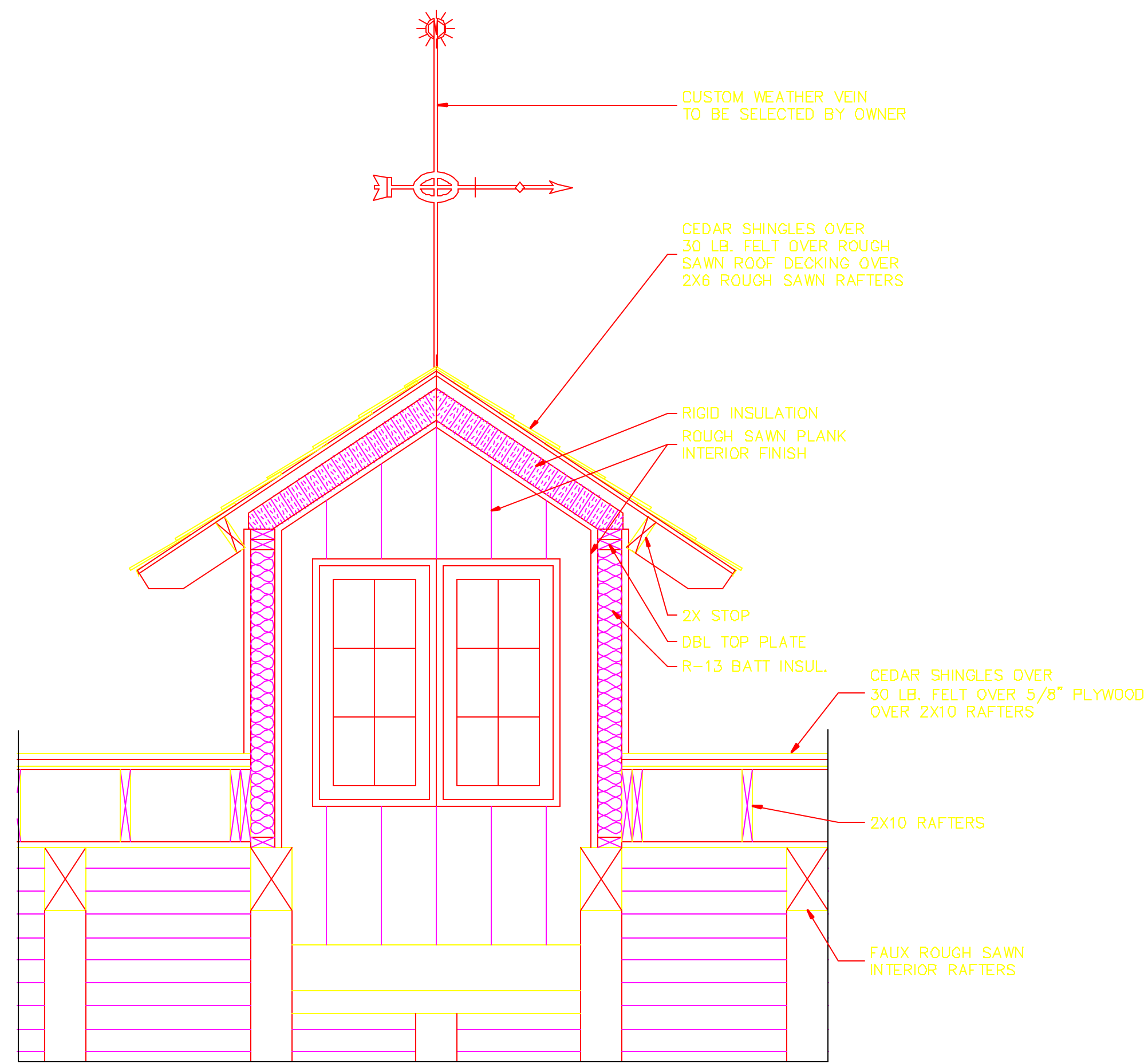
A304



1 SECTION DETAIL
3/4" = 1'-0"



3 SECTION DETAIL
3/4" = 1'-0"



2 SECTION DETAIL
3/4" = 1'-0"

Copyright 2001 Moss Creek Designs. The use of this document and the log home design herein is strictly controlled by US Copyright law. This document may not be copied nor may the log home design be copied, emulated, or referenced by either an individual or a log home company without prior written approval by MossCreek Designs. All violations will be prosecuted to the fullest extent of the law with a minimum of a \$100,000 per incident to both the consumer and the log home company.

MossCreek
Designs

Designs For Life!

Atrium Suite #8
111 N. Central Ave.
Knoxville, TN 37902
Tel: (865) 637-2166
Fax: (865) 637-2188
www.moss creek.net
A Division of Designers Alliance, Inc.

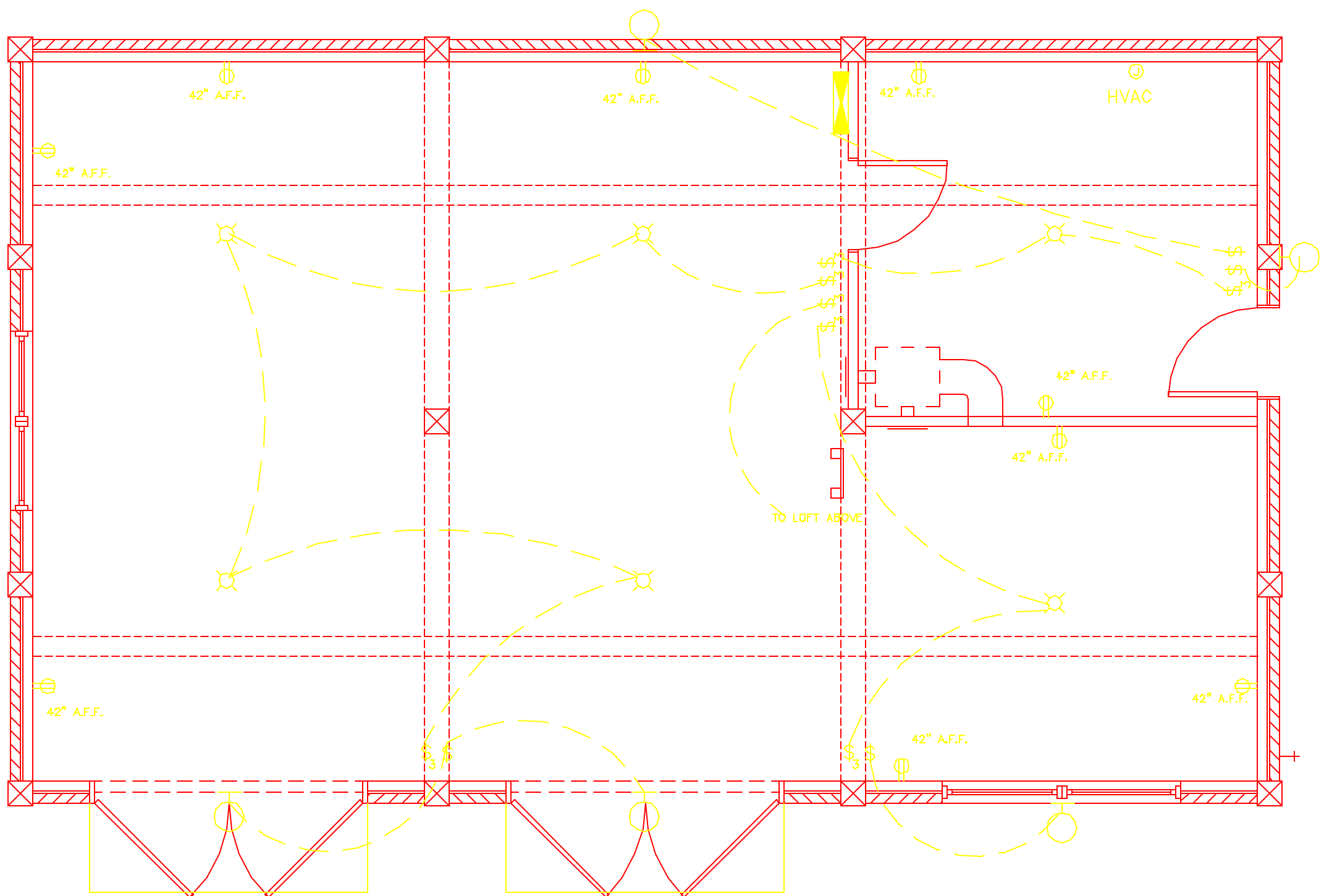
TIGGES RESIDENCE—GARAGE

LAKE GLENNVILLE
NORTH CAROLINA

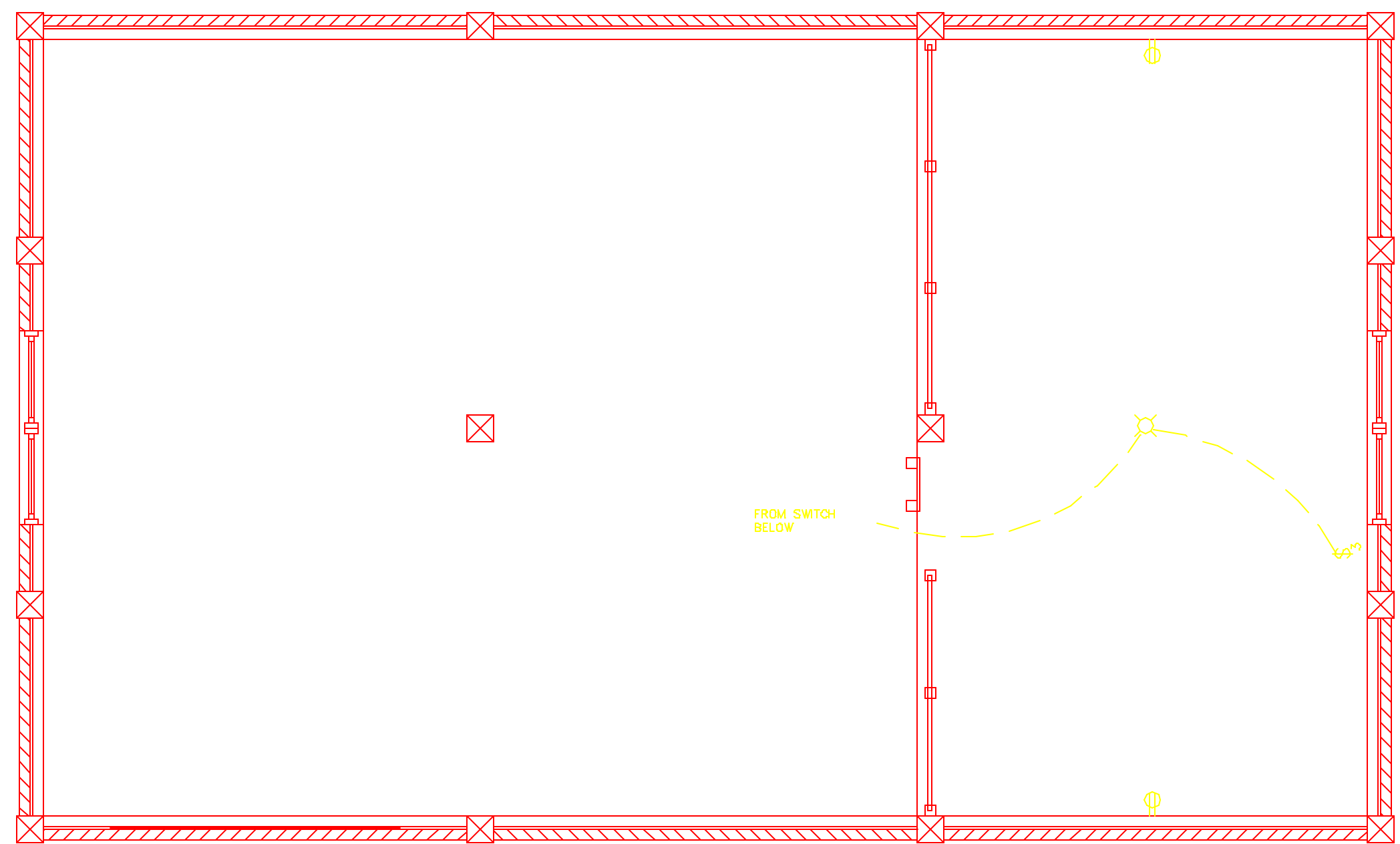
Revision no.	
Project No.	0114_02
Cad File	011402A305
Drawn	TAH
Checked	AH
Date	09-20-01
Scale	1/4"=1'-0"
Title/No.	

DETAILS

A305



1 ELECTRICAL PLAN / MAIN
1/4" = 1'-0"



2 ELECTRICAL PLAN / LOFT
1/4" = 1'-0"

ELECTRICAL LEGEND	
	INCANDESCENT LIGHT FIXTURE
	110 OUTLET BOX
	220 OUTLET BOX
	WALL MOUNTED FIXTURE
	DIRECTIONAL OR TRACK HALOGON FIXTURE
	JUNCTION BOX
	GROUND FAULT INTERRUPTER OUTLET
	GROUND FAULT INTERRUPTER w/COVER
	FLOOR MOUNTED 110 RECEPTICAL
	PANEL BOX (SIZE AS NOTED ON PLAN)
	TELEVISION CONECTION
	PHONE JACK
	FLORESCENT FIXTURE
	SMOKE DETECTOR
	RECESSED CAN
	VENT FAN LIGHT
	CEILING FAN
	FLOOD LIGHT
	SINGLE POLE SWITCH
	DOUBLE POLE SWITCH

Copyright 2001 Moss Creek Designs. The use of this document and the log home design herein is strictly controlled by US Copyright law. This document may not be copied nor may the log home design be copied, emulated, or referenced by either an individual or a log home company without prior written approval by MossCreek Designs. All violations will be prosecuted to the fullest extent of the law with a minimum of a \$100,000 per incident to both the consumer and the log home company.