

FIRST FLOOR PLAN
 FIRST FLOOR PLAN - 1122 SF TOTAL - 1836 SF

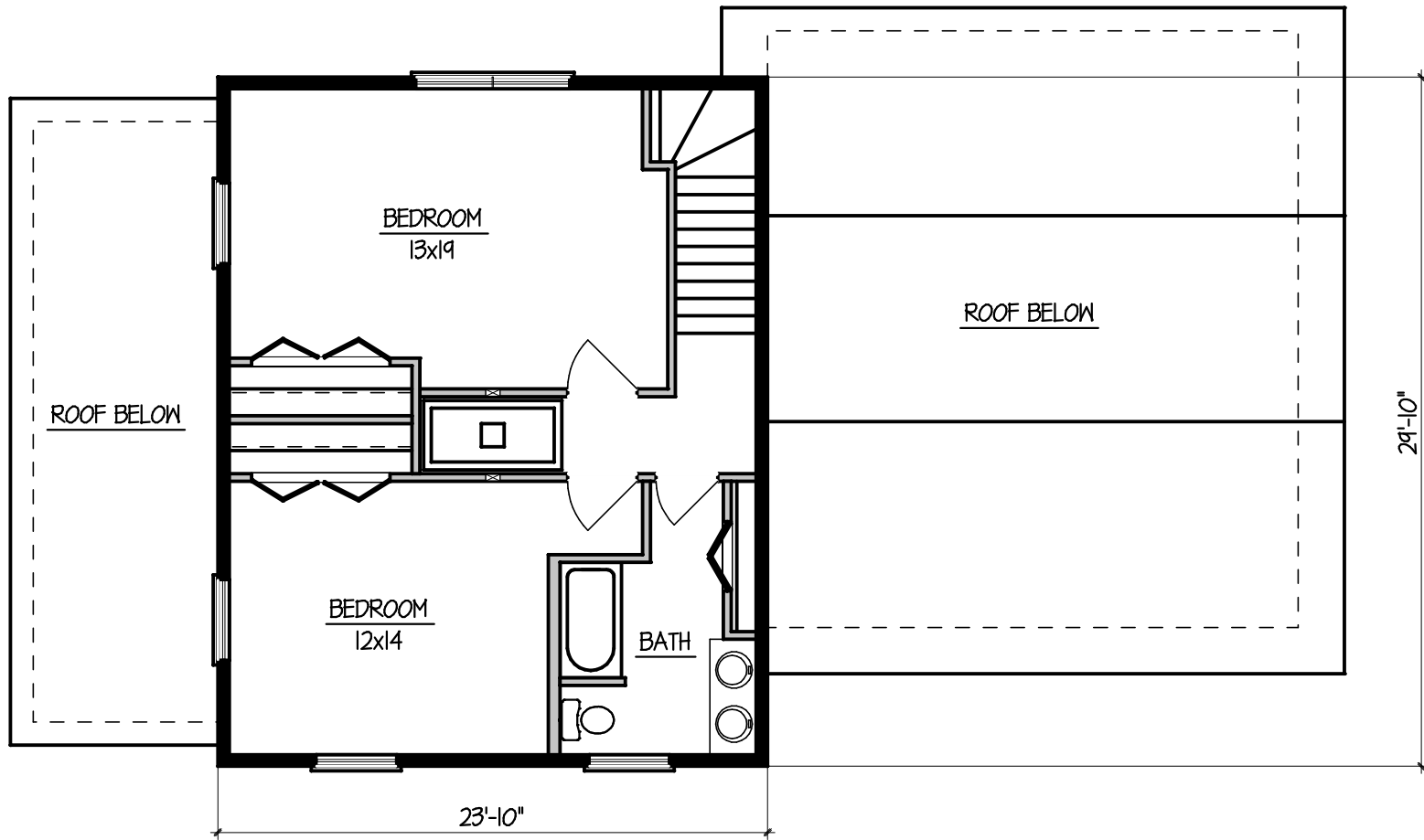
MODEL:
NEWPORT 1836C TRADITIONAL

TITLE:
FIRST FLOOR PLAN

HEARTHSTONE, INC.
 1630 EAST HIGHWAY 25/10
 DANDRIDGE, TENNESSEE 37125
 800-247-4442

THE DESIGN REPRESENTED ON THIS PLAN IS INTENDED TO BE USED EXCLUSIVELY IN CONJUNCTION WITH THE CONSTRUCTION OF A STRUCTURE MANUFACTURED BY HEARTHSTONE, INC., AND, UNDER COPYRIGHT LAW, MAY NOT BE USED FOR ANY OTHER PURPOSE.

©2002 HEARTHSTONE, INC.
 ALL RIGHTS RESERVED RESPECTING DESIGN AND SUBJECT SHOWN ON THIS PLAN
 TIMBERWRIGHT® & TIMBER TRACE™ ARE REGISTERED TRADEMARKS



SECOND FLOOR PLAN
SECOND FLOOR PLAN - 714 SF

MODEL:
NEWPORT 1836C TRADITIONAL

TITLE:
SECOND FLOOR PLAN

HEARTHSTONE, INC.
 1630 EAST HIGHWAY 25/10
 DANDRIDGE, TENNESSEE 37125
 800-247-4442

THE DESIGN REPRESENTED ON THIS PLAN IS INTENDED TO BE USED EXCLUSIVELY IN CONJUNCTION WITH THE CONSTRUCTION OF A STRUCTURE MANUFACTURED BY HEARTHSTONE, INC., AND, UNDER COPYRIGHT LAW, MAY NOT BE USED FOR ANY OTHER PURPOSE.

©2002 HEARTHSTONE, INC.
 ALL RIGHTS RESERVED RESPECTING DESIGN AND SUBJECT SHOWN ON THIS PLAN
 TIMBERWRIGHT® & TIMBER TRACE™ ARE REGISTERED TRADEMARKS



ELEVATION @ FRONT

MODEL:

THE NEWPORT 1836

TITLE:

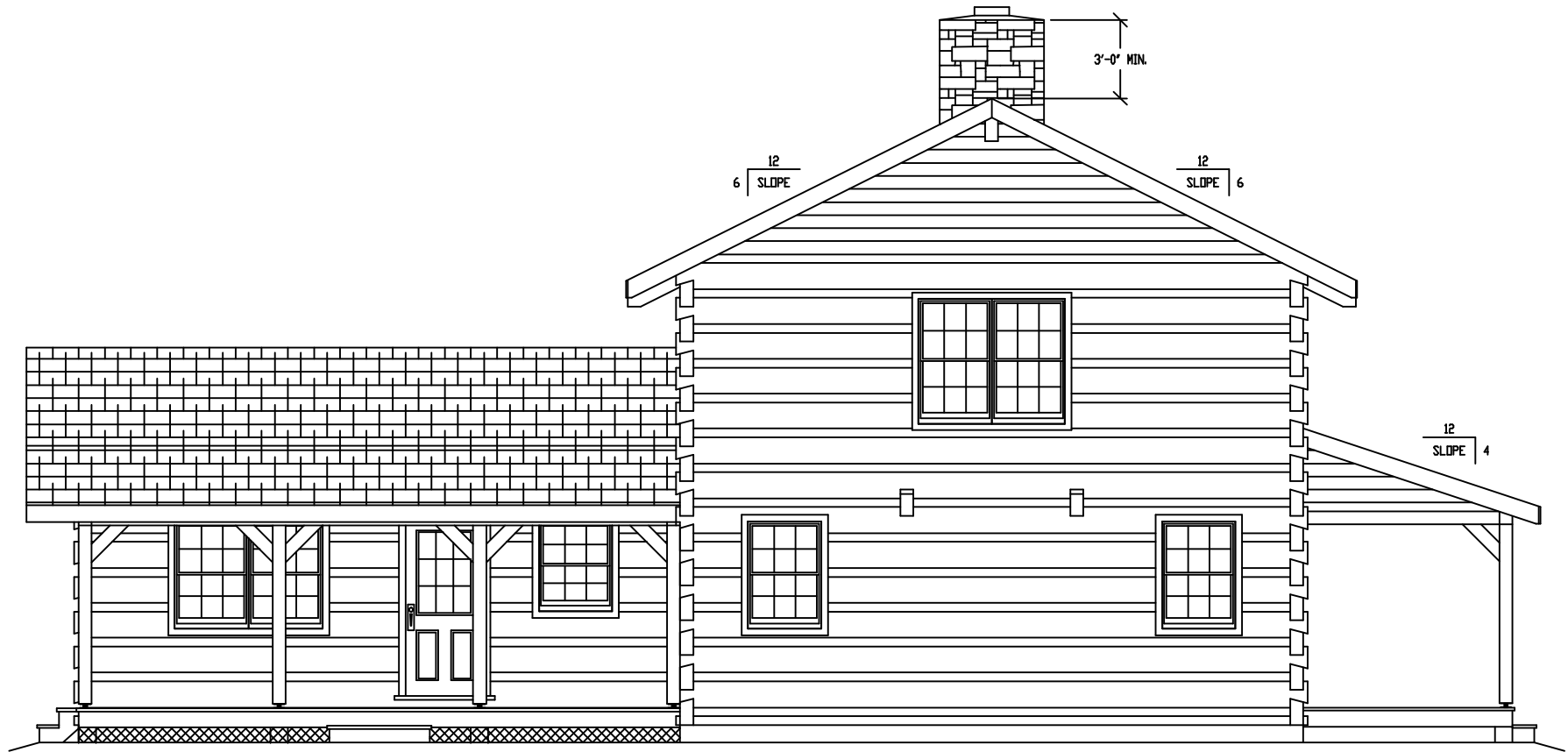
FRONT ELEVATION



HEARTHSTONE, INC.
 1630 EAST HIGHWAY 25/70
 DANDRIDGE, TENNESSEE 37125
 (865)-397-9425

THE DESIGN REPRESENTED ON THIS PLAN IS INTENDED TO BE USED EXCLUSIVELY IN CONJUNCTION WITH THE CONSTRUCTION OF A STRUCTURE MANUFACTURED BY HEARTHSTONE, INC., AND, UNDER COPYRIGHT LAW, MAY NOT BE USED FOR ANY OTHER PURPOSE.

© 1999 HEARTHSTONE, INC.
 ALL RIGHTS RESERVED RESPECTING DESIGN AND SUBJECT SHOWN ON THIS PLAN



ELEVATION @ LEFT END

MODEL:

THE NEWPORT 1836

TITLE:

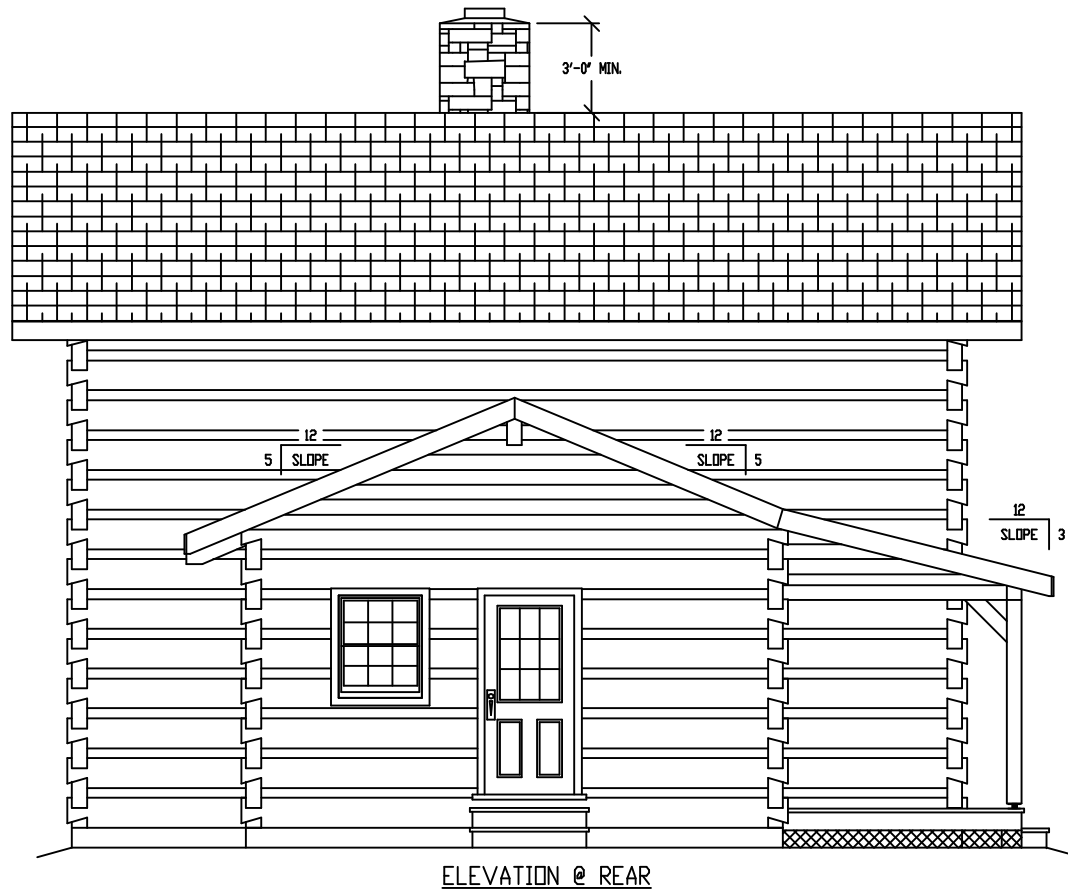
LEFT ELEVATION



HEARTHSTONE, INC.
 1630 EAST HIGHWAY 25/70
 DANDRIDGE, TENNESSEE 37125
 (865)-397-9425

THE DESIGN REPRESENTED ON THIS PLAN IS INTENDED TO BE USED EXCLUSIVELY IN CONJUNCTION WITH THE CONSTRUCTION OF A STRUCTURE MANUFACTURED BY HEARTHSTONE, INC., AND, UNDER COPYRIGHT LAW, MAY NOT BE USED FOR ANY OTHER PURPOSE.

© 1999 HEARTHSTONE, INC.
 ALL RIGHTS RESERVED RESPECTING DESIGN AND SUBJECT SHOWN ON THIS PLAN



MODEL:
THE NEWPORT 1836

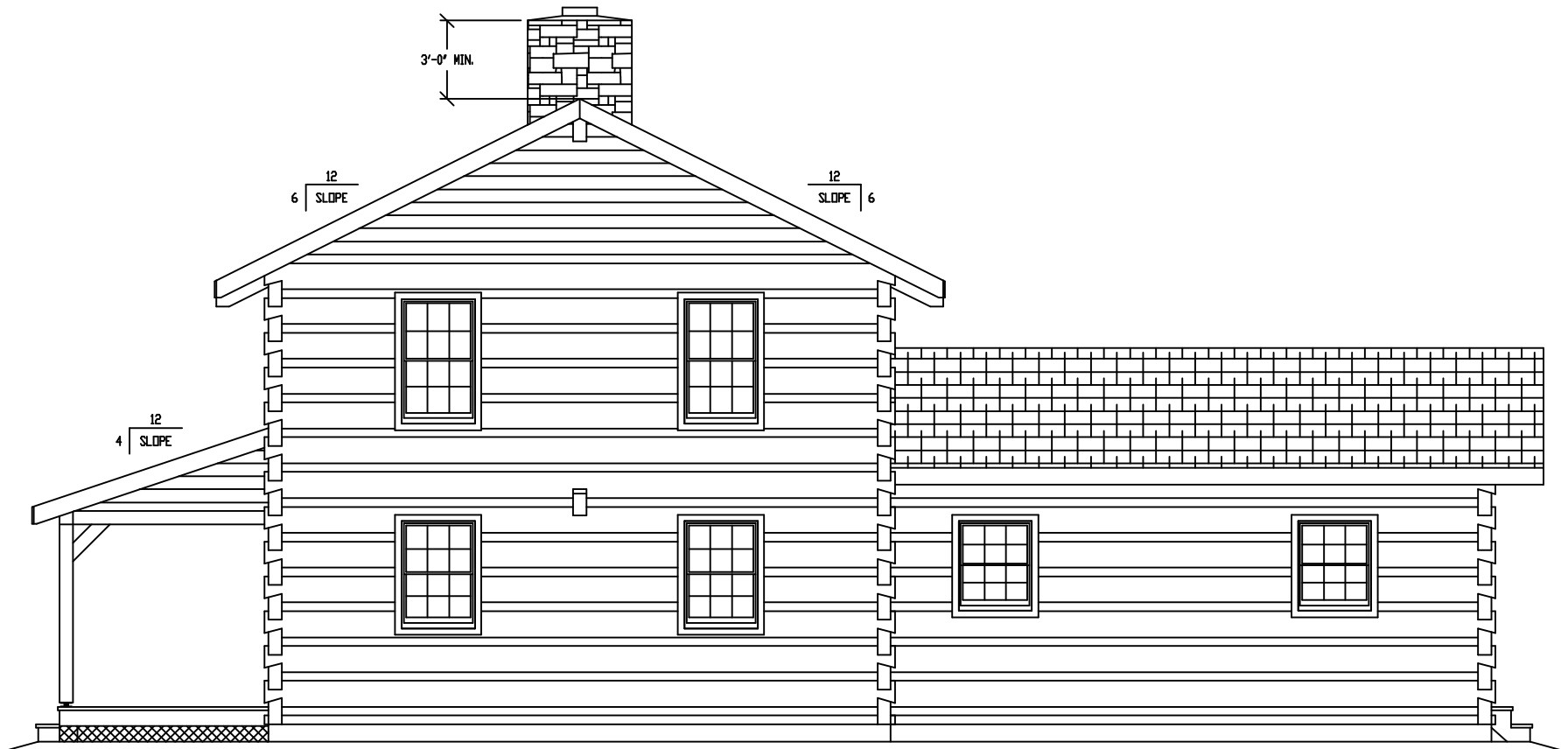
TITLE:
REAR ELEVATION



HEARTHSTONE, INC.
1630 EAST HIGHWAY 25/70
DANDRIDGE, TENNESSEE 37125
(865)-397-9425

THE DESIGN REPRESENTED ON THIS PLAN IS INTENDED TO BE USED EXCLUSIVELY IN CONJUNCTION WITH THE CONSTRUCTION OF A STRUCTURE MANUFACTURED BY HEARTHSTONE, INC., AND, UNDER COPYRIGHT LAW, MAY NOT BE USED FOR ANY OTHER PURPOSE.

© 1999 HEARTHSTONE, INC.
ALL RIGHTS RESERVED RESPECTING DESIGN AND SUBJECT SHOWN ON THIS PLAN



ELEVATION @ RIGHT END

MODEL:

THE NEWPORT 1836

TITLE:

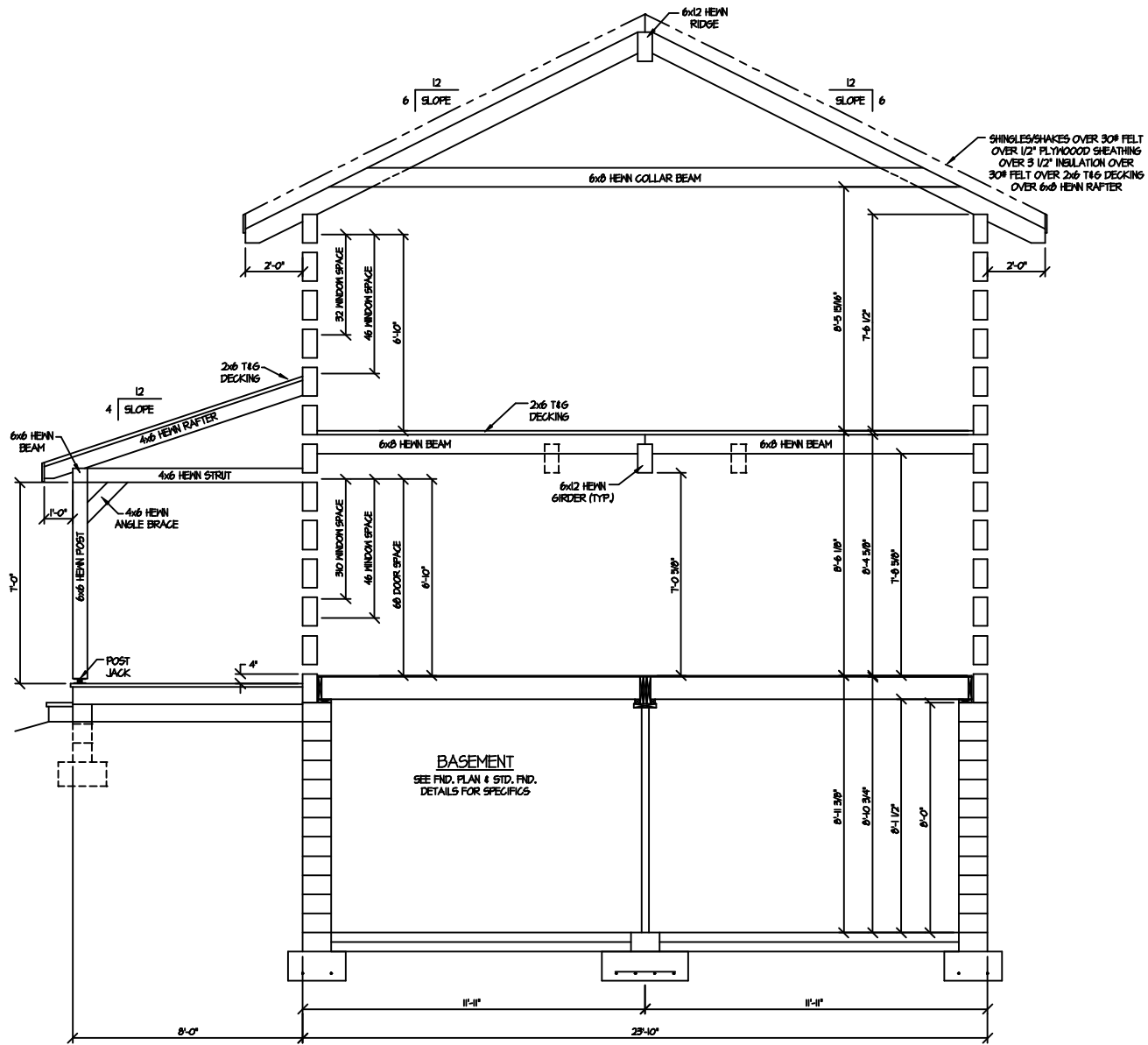
RIGHT ELEVATION



HEARTHSTONE, INC.
 1630 EAST HIGHWAY 25/70
 DANDRIDGE, TENNESSEE 37125
 (865)-397-9425

THE DESIGN REPRESENTED ON THIS PLAN IS INTENDED TO BE USED EXCLUSIVELY IN CONJUNCTION WITH THE CONSTRUCTION OF A STRUCTURE MANUFACTURED BY HEARTHSTONE, INC., AND, UNDER COPYRIGHT LAW, MAY NOT BE USED FOR ANY OTHER PURPOSE.

© 1999 HEARTHSTONE, INC.
 ALL RIGHTS RESERVED RESPECTING DESIGN AND SUBJECT SHOWN ON THIS PLAN



MODEL:

THE NEWPORT 1836

TITLE:

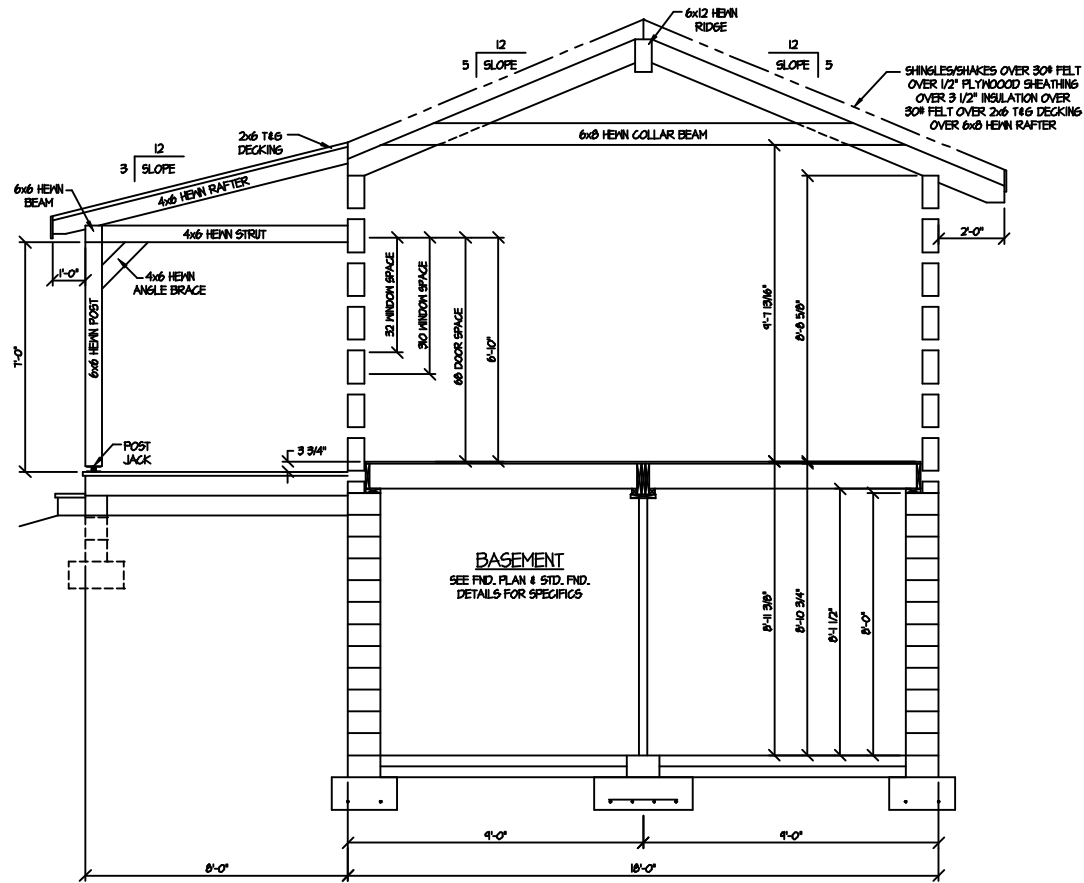
SECTION A



HEARTHSTONE, INC.
1630 EAST HIGHWAY 25/70
DANDRIDGE, TENNESSEE 37125
(865)-397-9425

THE DESIGN REPRESENTED ON THIS PLAN IS INTENDED TO BE USED EXCLUSIVELY IN CONJUNCTION WITH THE CONSTRUCTION OF A STRUCTURE MANUFACTURED BY HEARTHSTONE, INC., AND, UNDER COPYRIGHT LAW, MAY NOT BE USED FOR ANY OTHER PURPOSE.

© 1999 HEARTHSTONE, INC.
ALL RIGHTS RESERVED RESPECTING DESIGN AND SUBJECT SHOWN ON THIS PLAN



MODEL:

THE NEWPORT 1836

TITLE:

SECTION B



HEARTHSTONE, INC.
 1630 EAST HIGHWAY 25/70
 DANDRIDGE, TENNESSEE 37125
 (865)-397-9425

THE DESIGN REPRESENTED ON THIS PLAN IS INTENDED TO BE USED EXCLUSIVELY IN CONJUNCTION WITH THE CONSTRUCTION OF A STRUCTURE MANUFACTURED BY HEARTHSTONE, INC., AND, UNDER COPYRIGHT LAW, MAY NOT BE USED FOR ANY OTHER PURPOSE.

© 1999 HEARTHSTONE, INC.
 ALL RIGHTS RESERVED RESPECTING DESIGN AND SUBJECT SHOWN ON THIS PLAN