

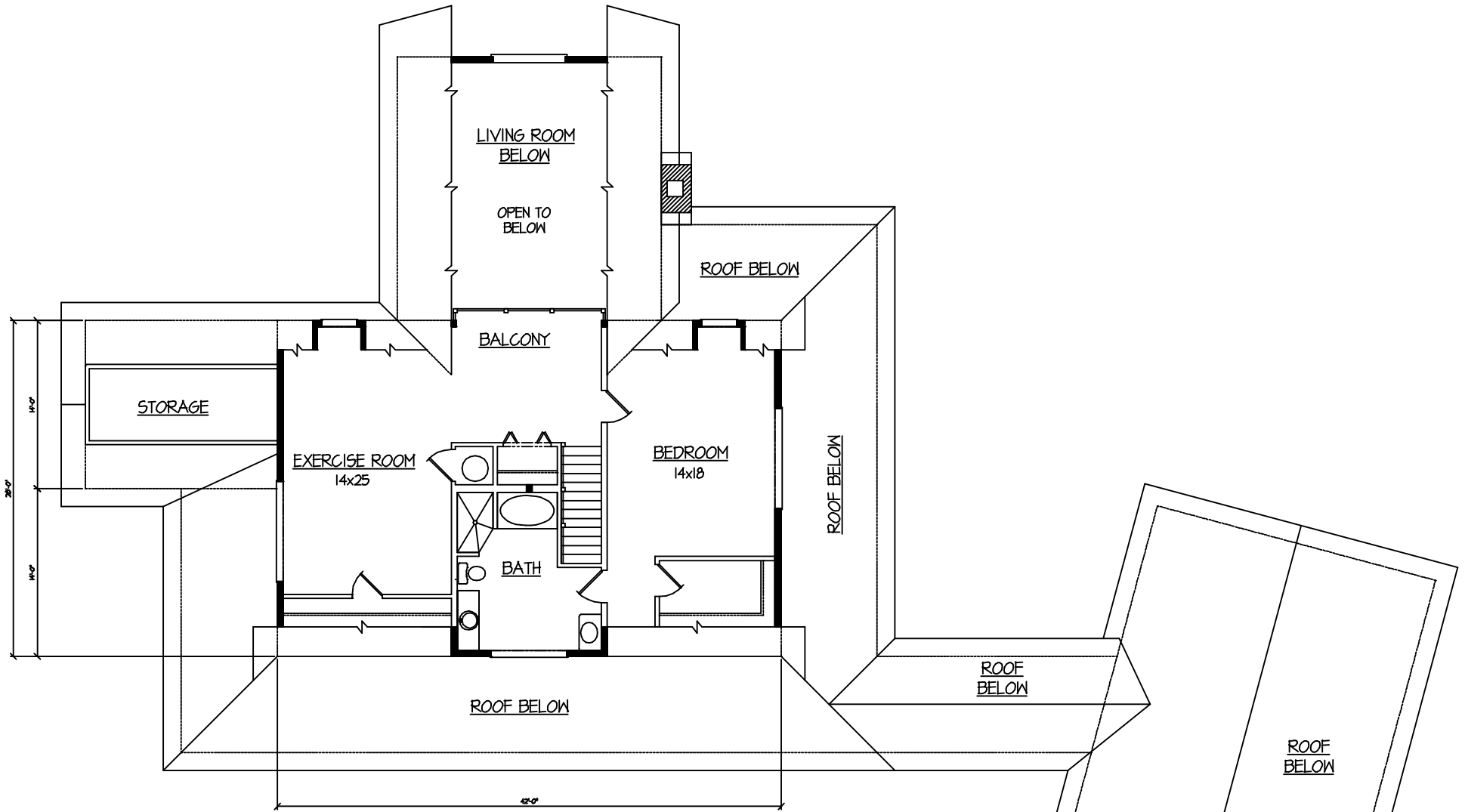
FIRST FLOOR PLAN
 FIRST FLOOR PLAN - 17489F TOTAL - 2843SF

MODEL:
 THE OCOEE 2893
 TITLE:
 FIRST FLOOR PLAN



HEARTHSTONE, INC.
 1630 EAST HIGHWAY 25/70
 DANDRIDGE, TENNESSEE 37125
 (865)-397-9425

THE DESIGN REPRESENTED ON THIS PLAN IS INTENDED TO BE USED EXCLUSIVELY IN CONJUNCTION WITH THE CONSTRUCTION OF A STRUCTURE MANUFACTURED BY HEARTHSTONE, INC., AND, UNDER COPYRIGHT LAW, MAY NOT BE USED FOR ANY OTHER PURPOSE.
 © 1999 HEARTHSTONE, INC.
 ALL RIGHTS RESERVED RESPECTING DESIGN AND SUBJECT SHOWN ON THIS PLAN



SECOND FLOOR PLAN
SECOND FLOOR - 1145 SF

MODEL:

THE OCOEE 2893

TITLE:

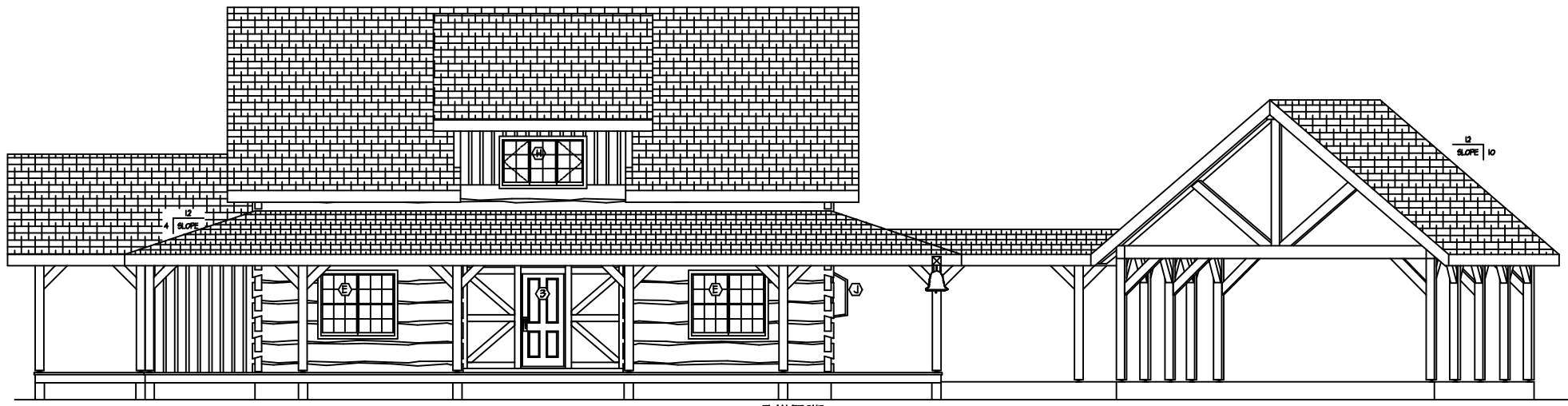
SECOND FLOOR PLAN



HEARTHSTONE, INC.
1630 EAST HIGHWAY 25/70
DANDRIDGE, TENNESSEE 37125
(865)-397-9425

THE DESIGN REPRESENTED ON THIS PLAN IS INTENDED TO BE USED EXCLUSIVELY IN CONJUNCTION WITH THE CONSTRUCTION OF A STRUCTURE MANUFACTURED BY HEARTHSTONE, INC., AND, UNDER COPYRIGHT LAW, MAY NOT BE USED FOR ANY OTHER PURPOSE.

© 1999 HEARTHSTONE, INC.
ALL RIGHTS RESERVED RESPECTING DESIGN AND SUBJECT SHOWN ON THIS PLAN



FLAN FRONT

MODEL:

THE OCOEE 2893

TITLE:

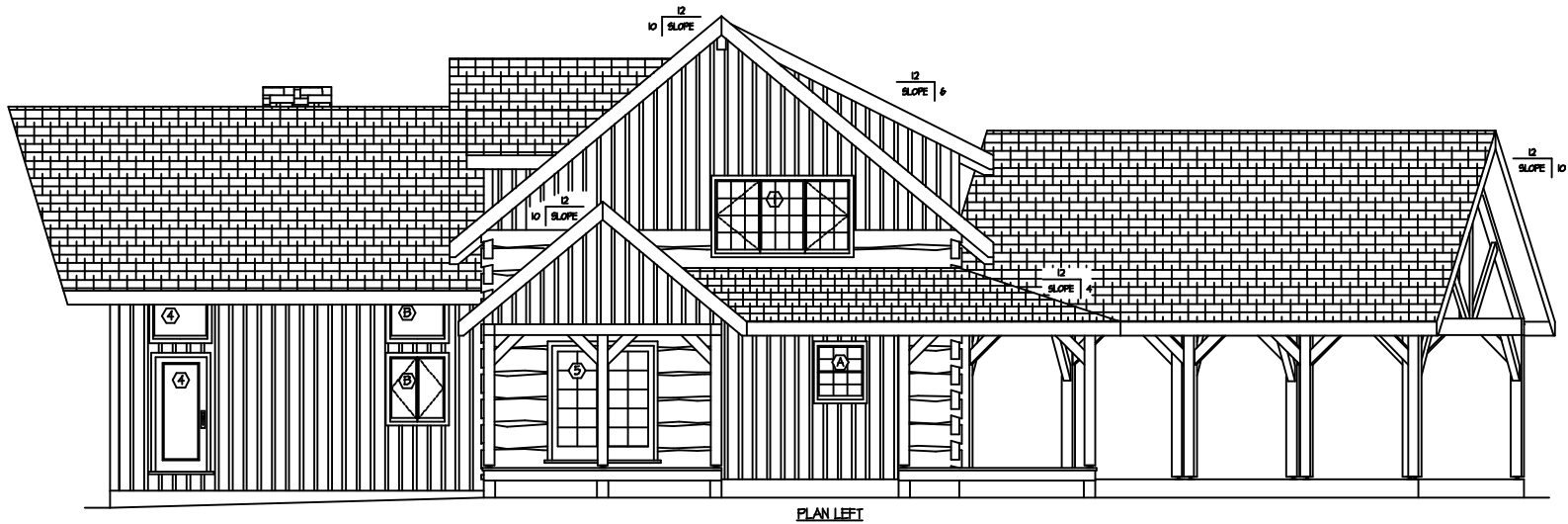
FRONT ELEVATION



HEARTHSTONE, INC.
 1630 EAST HIGHWAY 25/70
 DANDRIDGE, TENNESSEE 37125
 (865)-397-9425

THE DESIGN REPRESENTED ON THIS PLAN IS INTENDED TO BE USED EXCLUSIVELY IN CONJUNCTION WITH THE CONSTRUCTION OF A STRUCTURE MANUFACTURED BY HEARTHSTONE, INC., AND, UNDER COPYRIGHT LAW, MAY NOT BE USED FOR ANY OTHER PURPOSE.

© 1999 HEARTHSTONE, INC.
 ALL RIGHTS RESERVED RESPECTING DESIGN AND SUBJECT SHOWN ON THIS PLAN



MODEL:

THE OCOEE 2893

TITLE:

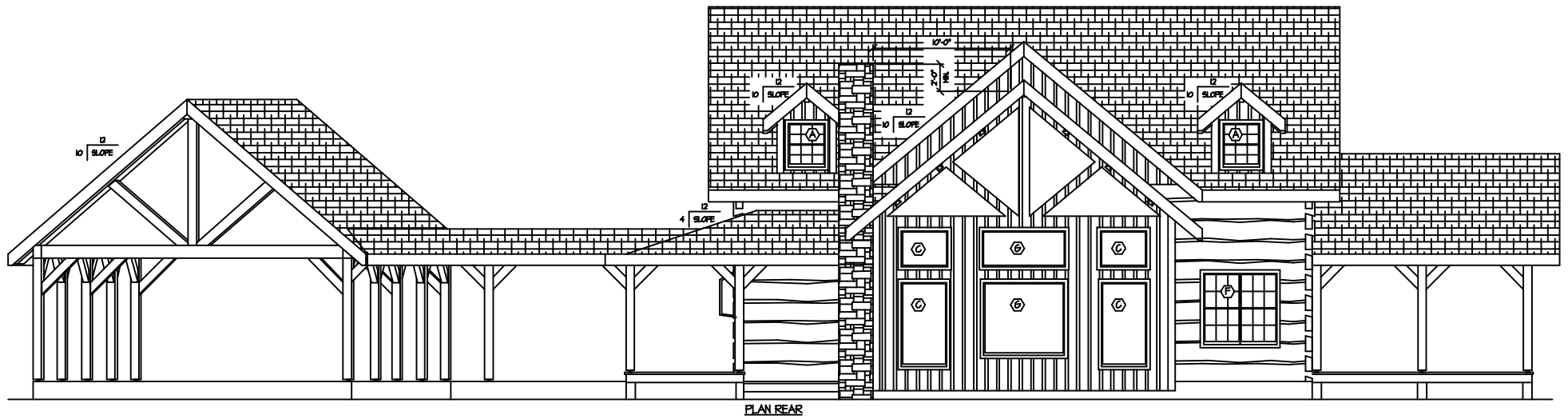
LEFT ELEVATION



HEARTHSTONE, INC.
 1630 EAST HIGHWAY 25/70
 DANDRIDGE, TENNESSEE 37125
 (865)-397-9425

THE DESIGN REPRESENTED ON THIS PLAN IS INTENDED TO BE USED EXCLUSIVELY IN CONJUNCTION WITH THE CONSTRUCTION OF A STRUCTURE MANUFACTURED BY HEARTHSTONE, INC., AND, UNDER COPYRIGHT LAW, MAY NOT BE USED FOR ANY OTHER PURPOSE.

© 1999 HEARTHSTONE, INC.
 ALL RIGHTS RESERVED RESPECTING DESIGN AND SUBJECT SHOWN ON THIS PLAN



PLAN REAR

MODEL:

THE OCOEE 2893

TITLE:

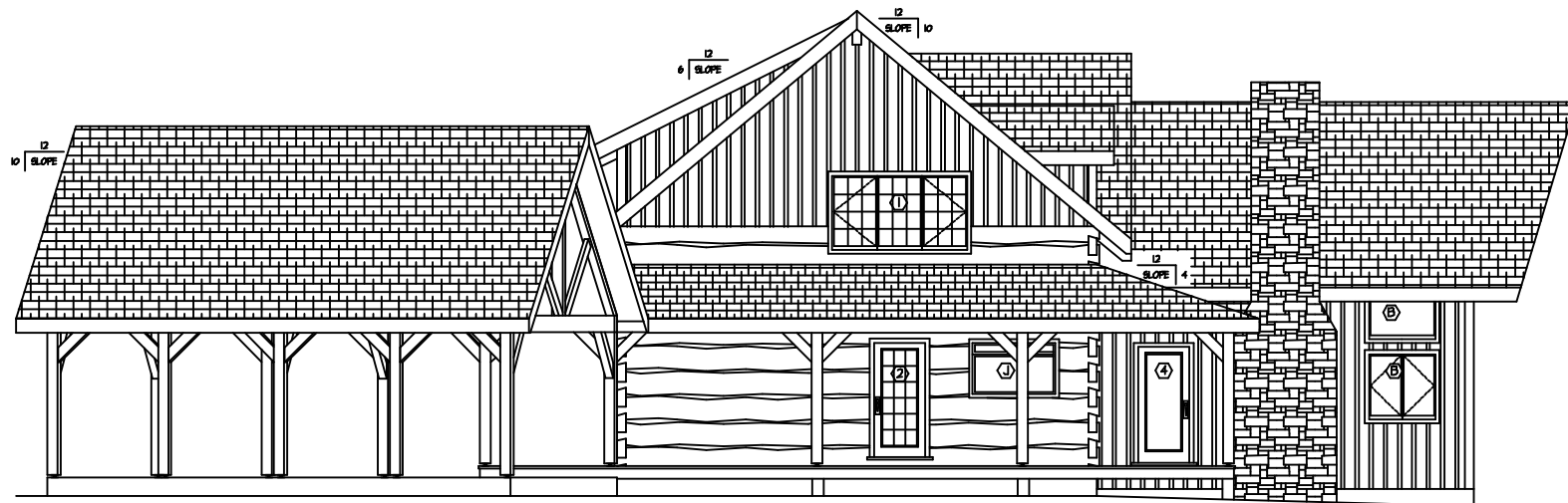
REAR ELEVATION



HEARTHSTONE, INC.
 1630 EAST HIGHWAY 25/70
 DANDRIDGE, TENNESSEE 37125
 (865)-397-9425

THE DESIGN REPRESENTED ON THIS PLAN IS INTENDED TO BE USED EXCLUSIVELY IN CONJUNCTION WITH THE CONSTRUCTION OF A STRUCTURE MANUFACTURED BY HEARTHSTONE, INC., AND, UNDER COPYRIGHT LAW, MAY NOT BE USED FOR ANY OTHER PURPOSE.

© 1999 HEARTHSTONE, INC.
 ALL RIGHTS RESERVED RESPECTING DESIGN AND SUBJECT SHOWN ON THIS PLAN



PLAN RIGHT

MODEL:

THE OCOEE 2893

TITLE:

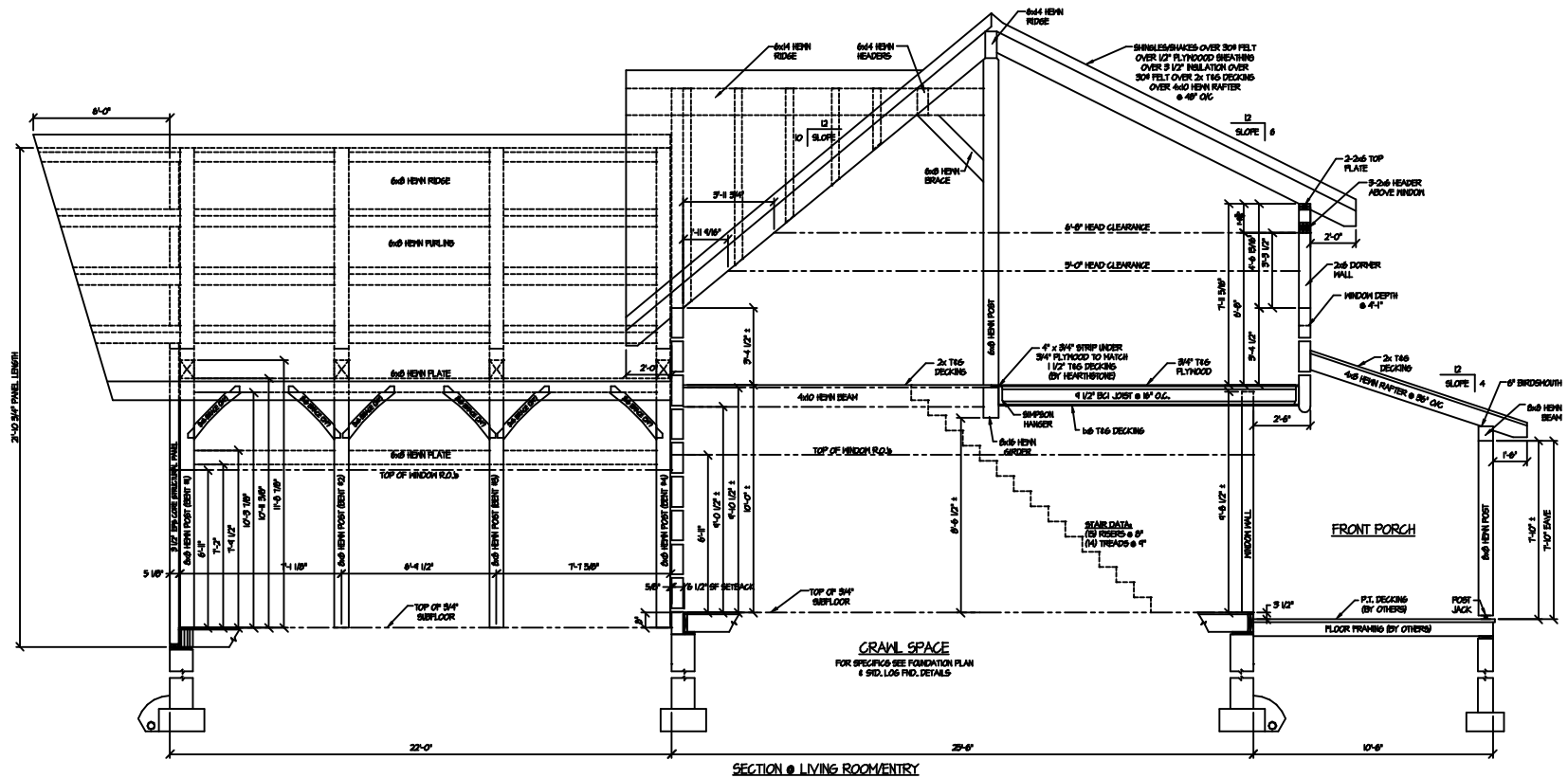
RIGHT ELEVATION



HEARTHSTONE, INC.
 1630 EAST HIGHWAY 25/70
 DANDRIDGE, TENNESSEE 37125
 (865)-397-9425

THE DESIGN REPRESENTED ON THIS PLAN IS INTENDED TO BE USED EXCLUSIVELY IN CONJUNCTION WITH THE CONSTRUCTION OF A STRUCTURE MANUFACTURED BY HEARTHSTONE, INC., AND, UNDER COPYRIGHT LAW, MAY NOT BE USED FOR ANY OTHER PURPOSE.

© 1999 HEARTHSTONE, INC.
 ALL RIGHTS RESERVED RESPECTING DESIGN AND SUBJECT SHOWN ON THIS PLAN



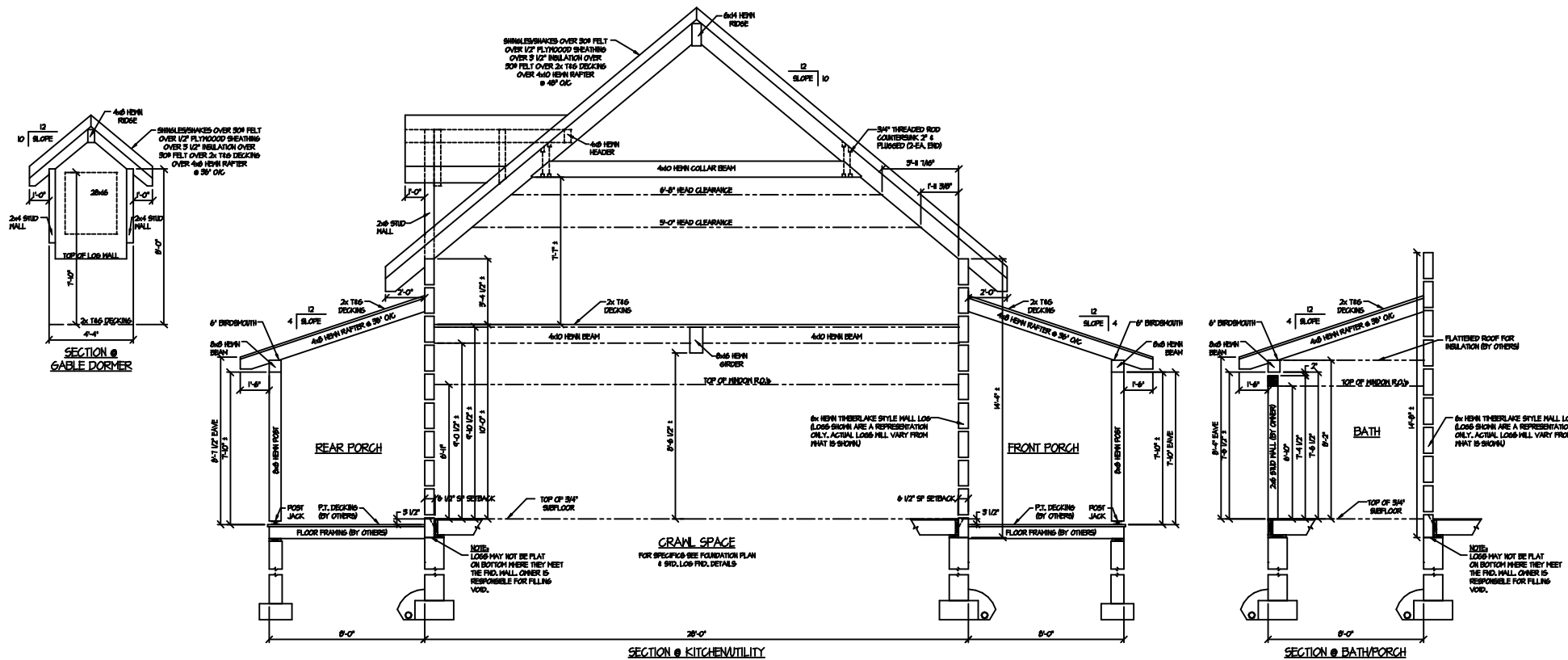
SECTION @ LIVING ROOM ENTRY

MODEL:
 THE OCOEE 2893
 TITLE:
 SECTION I



HEARTHSTONE, INC.
 1630 EAST HIGHWAY 25/70
 DANDRIDGE, TENNESSEE 37125
 (865)-397-9425

THE DESIGN REPRESENTED ON THIS PLAN IS INTENDED TO BE USED EXCLUSIVELY IN CONJUNCTION WITH THE CONSTRUCTION OF A STRUCTURE MANUFACTURED BY HEARTHSTONE, INC., AND, UNDER COPYRIGHT LAW, MAY NOT BE USED FOR ANY OTHER PURPOSE.
 © 1999 HEARTHSTONE, INC.
 ALL RIGHTS RESERVED RESPECTING DESIGN AND SUBJECT SHOWN ON THIS PLAN



MODEL:
 THE OCOEE 2893
 TITLE:
 SECTION J



HEARTHSTONE, INC.
 1630 EAST HIGHWAY 25/70
 DANDRIDGE, TENNESSEE 37125
 (865)-397-9425

THE DESIGN REPRESENTED ON THIS PLAN IS INTENDED TO BE USED EXCLUSIVELY IN CONJUNCTION WITH THE CONSTRUCTION OF A STRUCTURE MANUFACTURED BY HEARTHSTONE, INC., AND, UNDER COPYRIGHT LAW, MAY NOT BE USED FOR ANY OTHER PURPOSE.

© 1999 HEARTHSTONE, INC.
 ALL RIGHTS RESERVED RESPECTING DESIGN AND SUBJECT SHOWN ON THIS PLAN