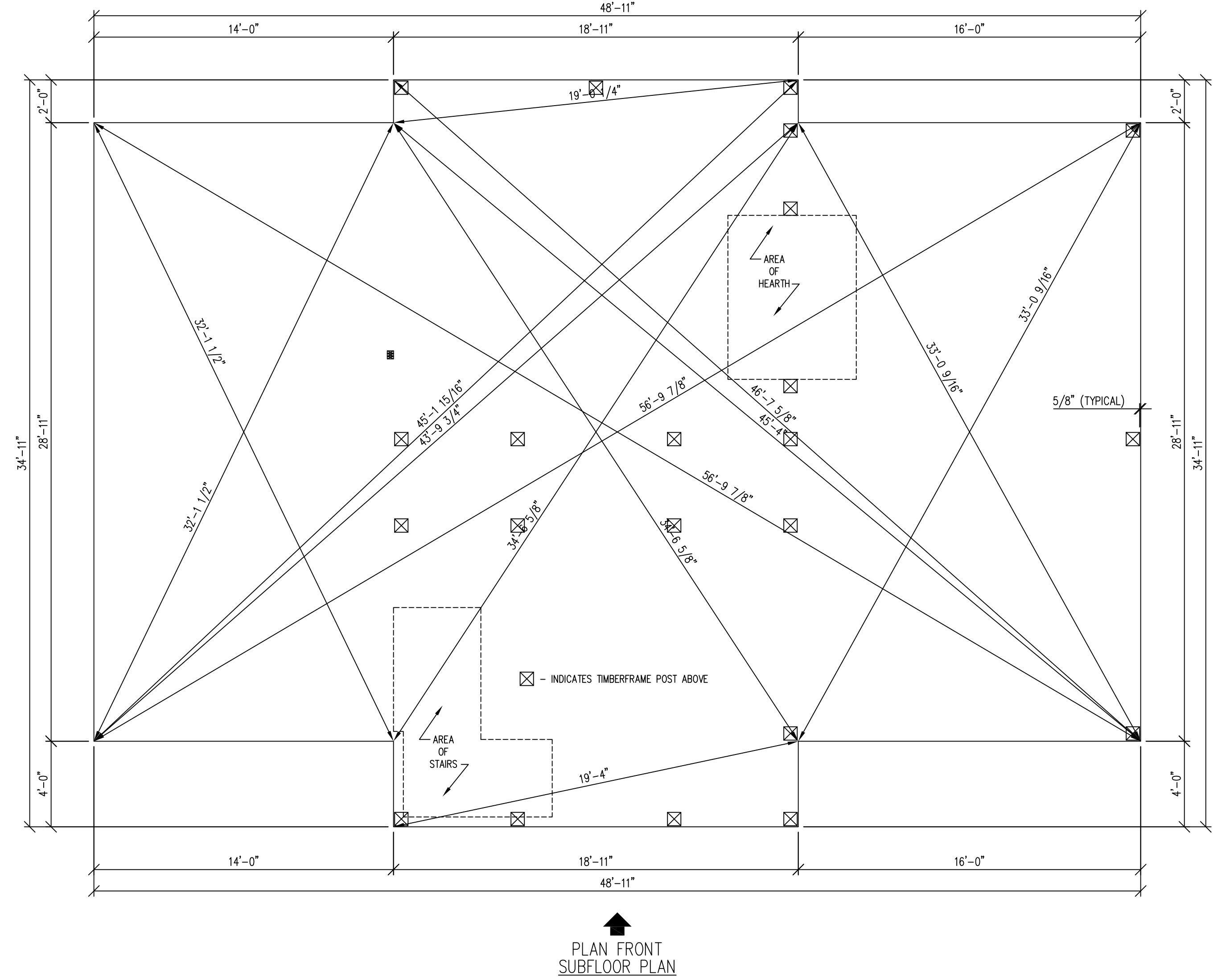
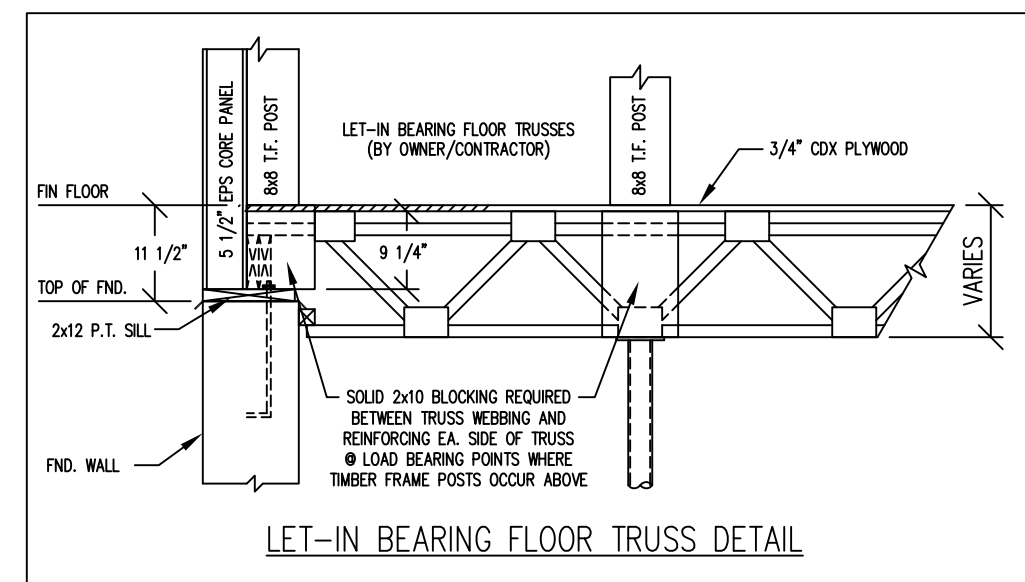


PLAN FRONT FOUNDATION/BASEMENT PLAN



PLAN FRONT SUBFLOOR PLAN



LET-IN BEARING FLOOR TRUSS DETAIL

INDICATES CONVENTIONALLY BUILT 2x LOAD-BEARING WALLS BY OTHERS.

NOTES:

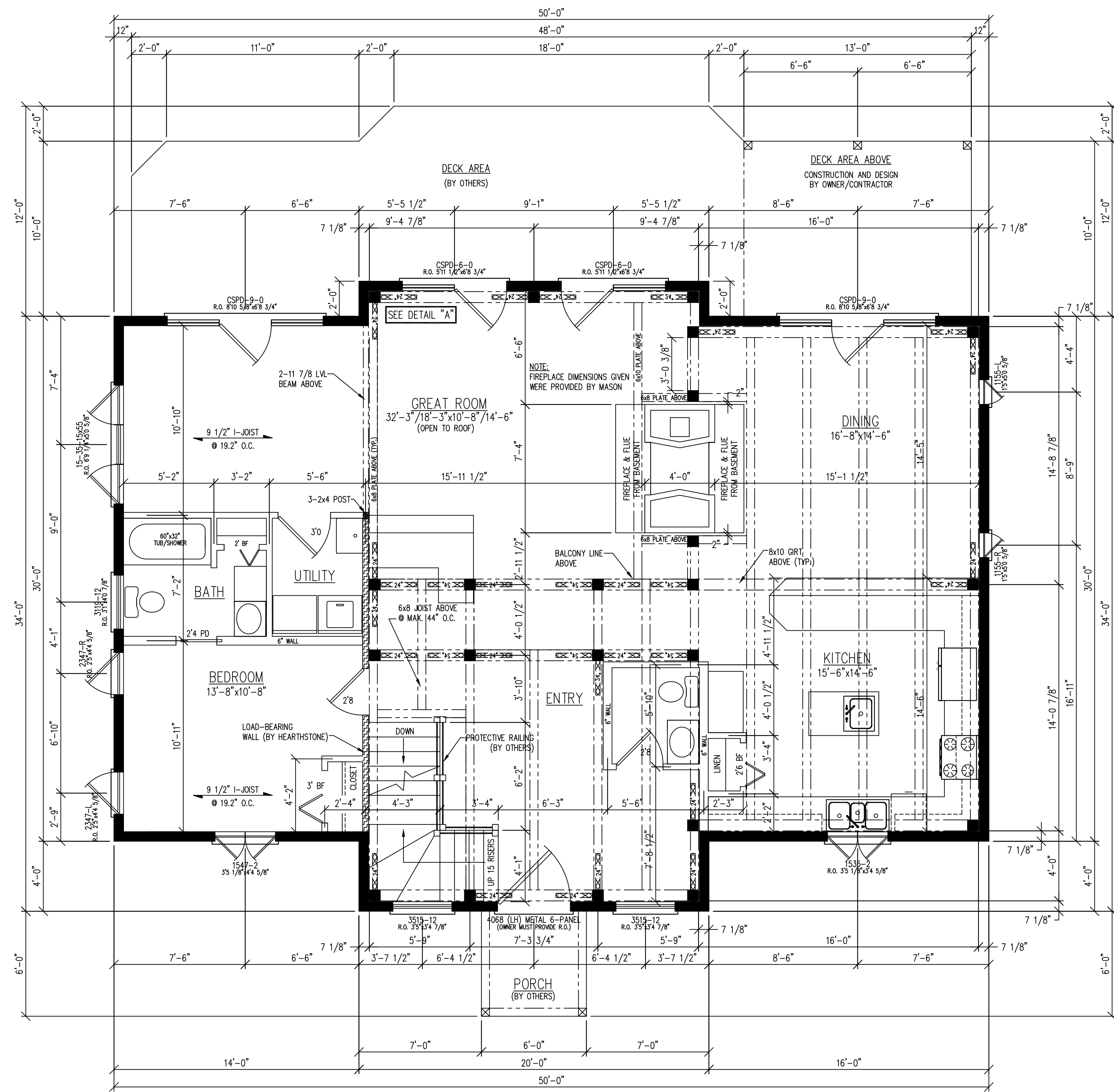
- WINDOWS/DOORS INDICATED ON THIS PLAN ARE MANUFACTURED BY HURD AND PROVIDED BY OTHERS.
- IF WINDOWS/DOORS ARE NOT PURCHASED FROM HEARTHSTONE BUILDERS INC., OWNER MUST VERIFY SIZES, LOCATIONS, ROUGH OPENING MEASUREMENTS, & MANUFACTURER PRIOR TO FABRICATION OF MATERIALS.
- BEDROOM WINDOWS DO NOT MEET EGRESS REQUIREMENTS.
- FOUNDATION PLANS & DETAILS PROVIDED BY HEARTHSTONE BUILDERS INC. ARE DESIGNED IN COMPLIANCE WITH MOST AREA CODES, CONSULT LOCAL BUILDING OFFICIALS FOR SOIL BEARING DATA & CODE REQUIREMENTS (i.e. SEISMIC ZONES, COASTAL REGIONS, ETC.)
- CAUTION:** DO NOT START FOUNDATION UNTIL YOU HAVE RECEIVED ALL APPLICABLE DRAWINGS AND DETAIL SHEETS FROM YOUR HEARTHSTONE REPRESENTATIVE.
- ROUGH OPENINGS FOR LIGHT/VENT/EXITS IN FOUNDATION BASEMENT WALL TO BE PROVIDED/LOCATED BY OWNER PRIOR TO CONSTRUCTION IN ACCORDANCE WITH SITE GRADE, LOCAL CODES & USE REQUIREMENTS. LINTEL OVER ALL OPENINGS.

HEARTHSTONE HOMES

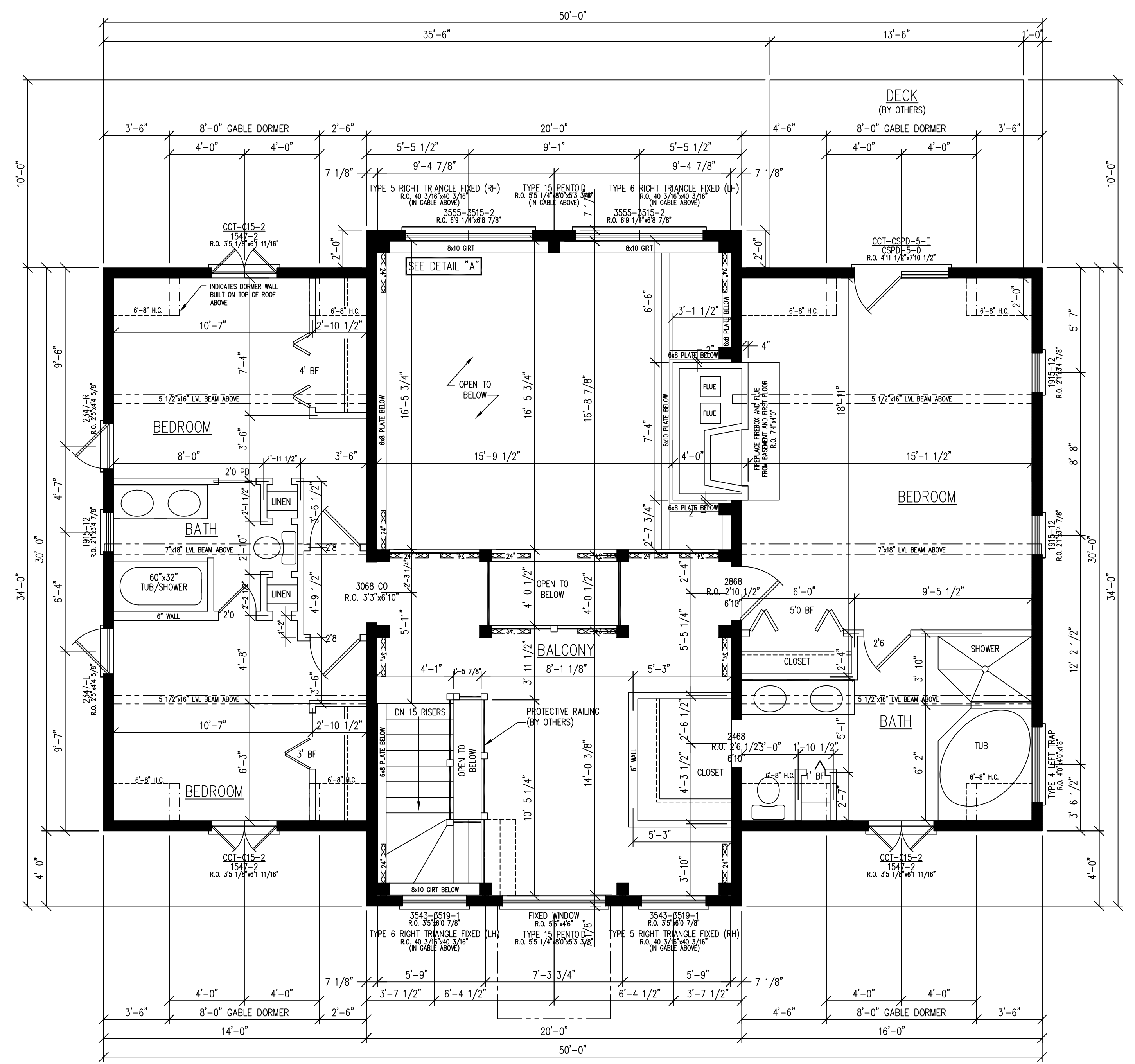
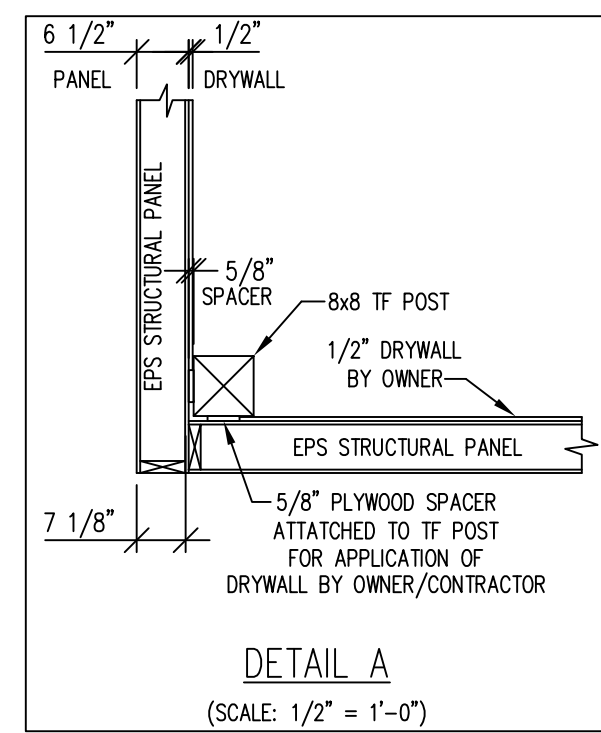
THE DESIGN REPRESENTED ON THIS PLAN IS INTENDED TO BE USED EXCLUSIVELY IN CONJUNCTION WITH THE CONSTRUCTION OF A STRUCTURE MANUFACTURED BY HEARTHSTONE, INC., AND IS NOT INTENDED FOR USE BY ANY OTHER MANUFACTURER OR BUILDING SYSTEM.

ALL RIGHTS RESERVED RESPECTING DESIGN AND SUBJECT SHOWN ON THIS DRAWING

WORK TO DIMENSIONS - DO NOT SCALE PRINT		DATE-LAST REVISION 04/95 DS	
SCALE	1/4"=1'-0"	HEARTHSTONE, INC.	CUSTOMER
DATE	08/16/1995	1630 EAST HIGHWAY 25/70 DANDRIDGE, TENNESSEE 37725	Dan Robbie
DRAWN BY	DS	615 - 397 - 9425	Avery Co., NC
CHECKED BY	MODEL		
APPROVED BY		Custom	Foundation/Subfloor Plan
			SALES ORDER NO. 3076
			JOB ORDER NO. 2723
			DRAWING NO. 00002610
			SHEET NO. 1



PLAN FRONT  
FIRST FLOOR PLAN



PLAN FRONT  
SECOND FLOOR PLAN

NOTES:

- WINDOWS/DOORS INDICATED ON THIS PLAN ARE MANUFACTURED BY HURD & PROVIDED BY OTHERS.
- SPEC SHEETS/ROUGH OPENINGS MUST BE SUPPLIED TO HEARTHSTONE, INC. IMMEDIATELY, IF STANDARD SPEC ANDERSEN WINDOWS AND/OR HEARTHSTONE DOORS ARE BEING SUBSTITUTED. ALSO VERIFY LOCATIONS WITH DIMENSIONS.

	INDICATES 3x6 KNEE BRACE BY HEARTHSTONE, INC. (# INDICATES SIZE)
	INDICATES 8x8 OAK POST BY HEARTHSTONE, INC.
	INDICATES 1/2" EPS CORE STRUCTURAL PANEL BY HEARTHSTONE, INC.
	INDICATES 2x LOAD-BEARING WALL (BY HEARTHSTONE)

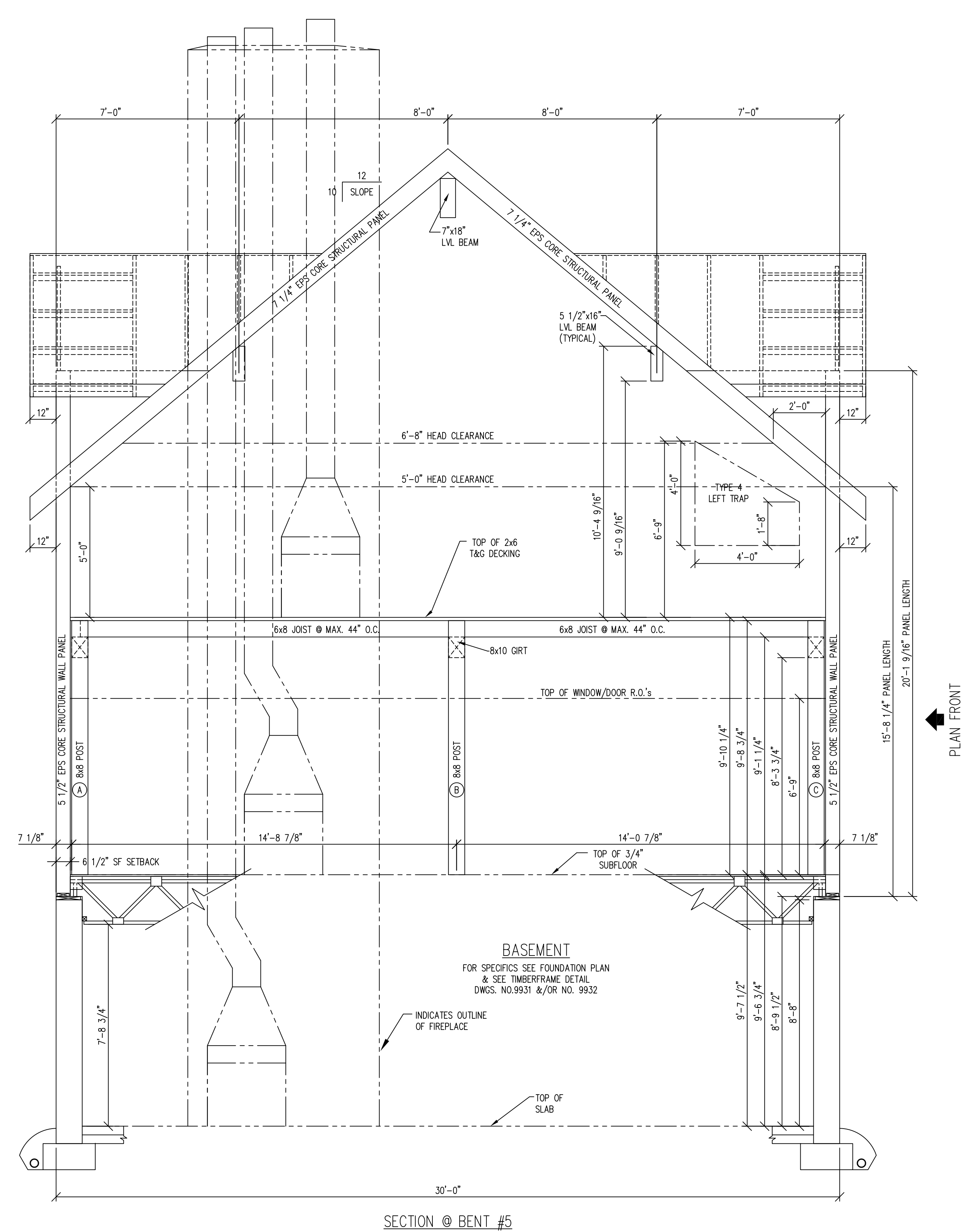
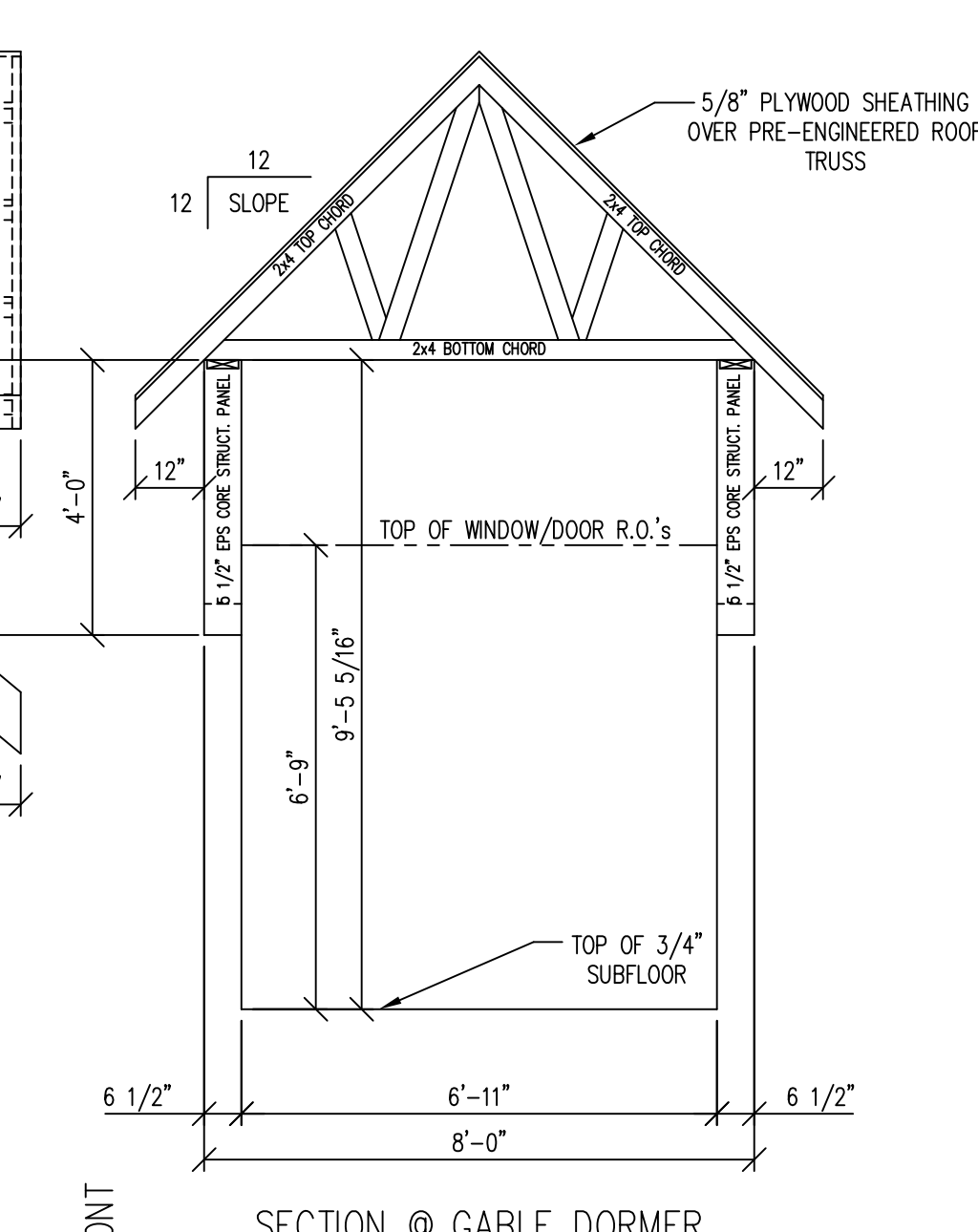
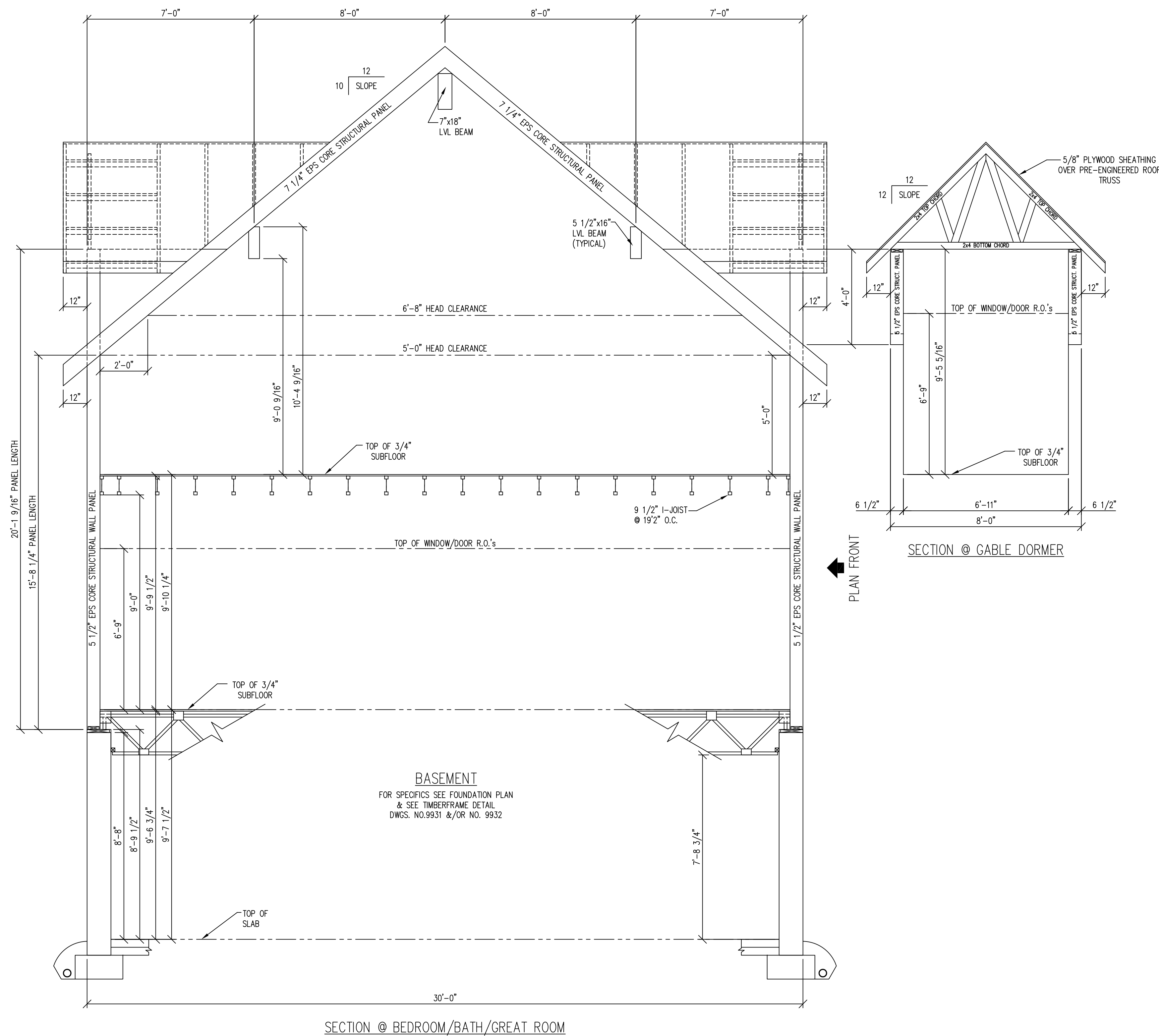
HEARTHSTONE  
HOMES

THE DESIGN REPRESENTED ON THIS PLAN IS INTENDED TO BE USED EXCLUSIVELY IN CONJUNCTION WITH THE CONSTRUCTION OF A STRUCTURE MANUFACTURED BY HEARTHSTONE, INC. AND IS NOT INTENDED FOR USE BY ANY OTHER MANUFACTURER OR BUILDING SYSTEM.

ALL RIGHTS RESERVED RESPECTING DESIGN AND SUBJECT SHOWN ON THIS DRAWING

WORK TO DIMENSIONS - DO NOT SCALE PRINT		DATE-LAST REVISION 04/95 DS	
SCALE	1/4"=1'-0"	HEARTHSTONE, INC.	CUSTOMER
DATE	08/16/1995	1630 EAST HIGHWAY 25/70 DANDRIDGE, TENNESSEE 37725	Dan Robbie
DRAWN BY	CHECKED BY	615 - 397 - 9425	Avery Co., NC
APPROVED BY	DS	Custom	First & Second Floor Plan
		TITLE	SALES ORDER NO.
			3076
			JOB ORDER NO.
			2723
			DRAWING NO.
			00002611
			SHEET NO.
			2

10/24/95 DS

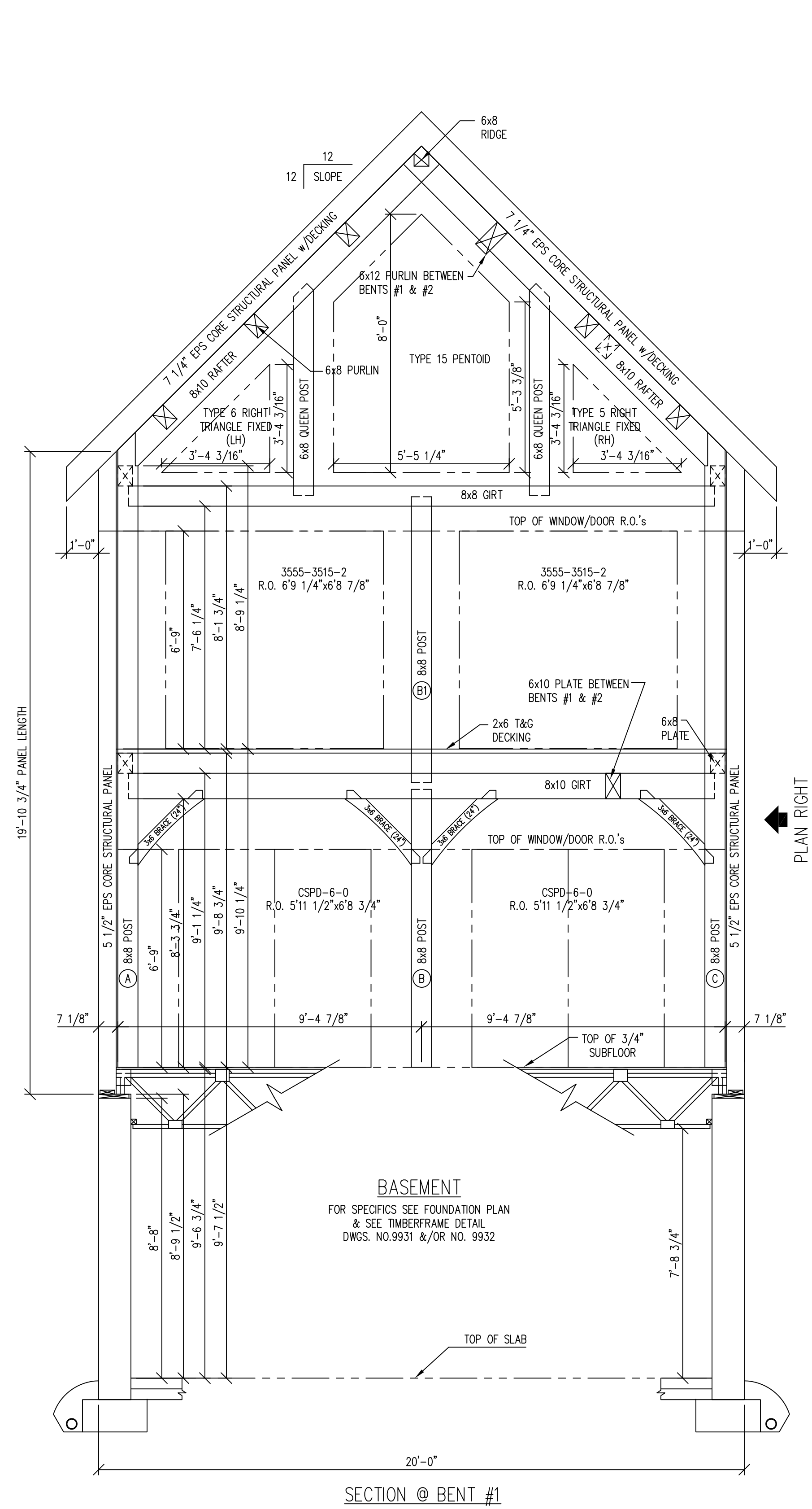


HEARTHSTONE  
HOMES

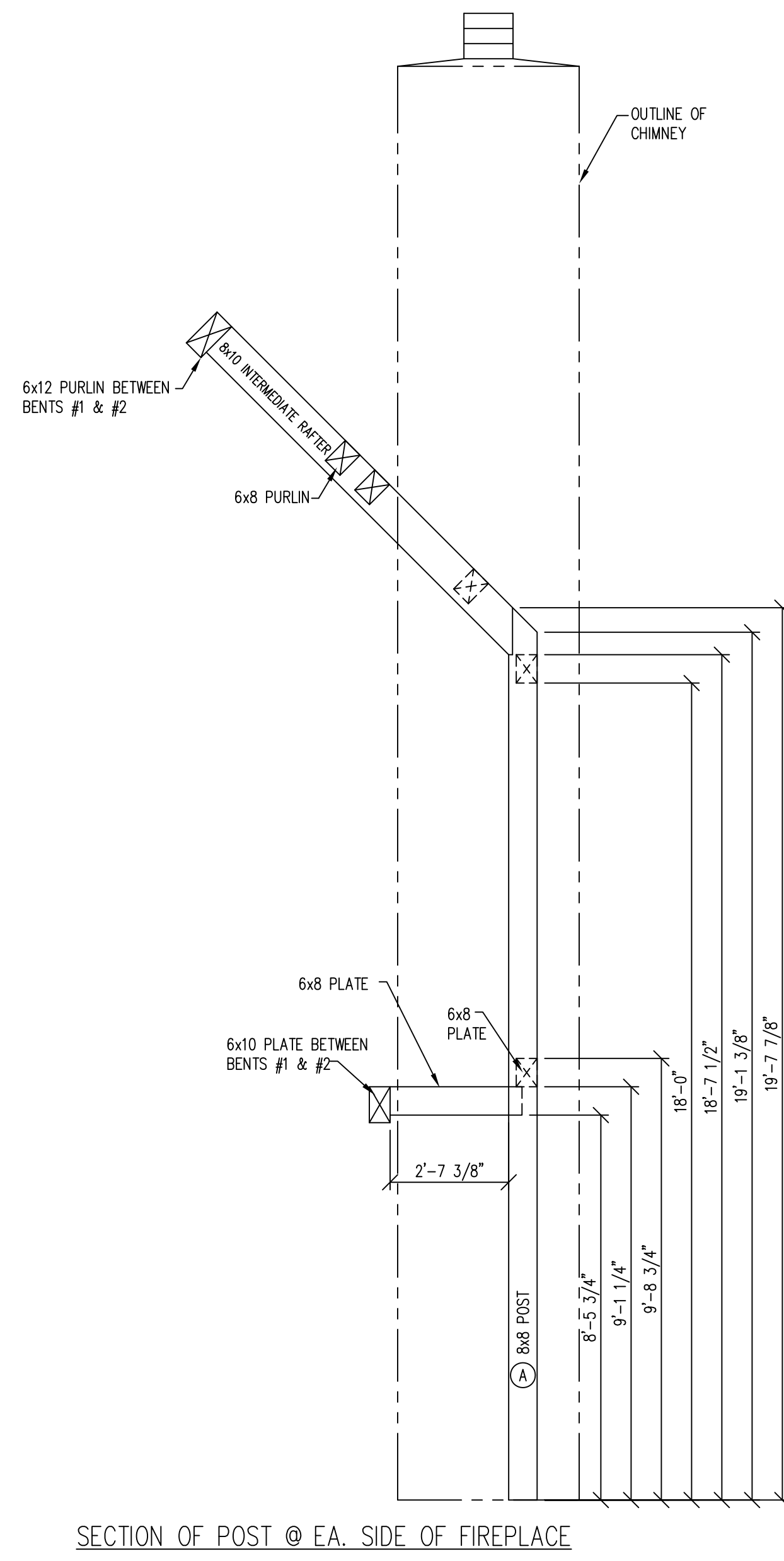
THE DESIGN REPRESENTED ON THIS PLAN IS INTENDED TO BE USED EXCLUSIVELY IN CONJUNCTION WITH THE CONSTRUCTION OF A STRUCTURE MANUFACTURED BY HEARTHSTONE, INC., AND IS NOT INTENDED FOR USE BY ANY OTHER MANUFACTURER OR BUILDING SYSTEM.

ALL RIGHTS RESERVED RESPECTING DESIGN AND SUBJECT SHOWN ON THIS DRAWING

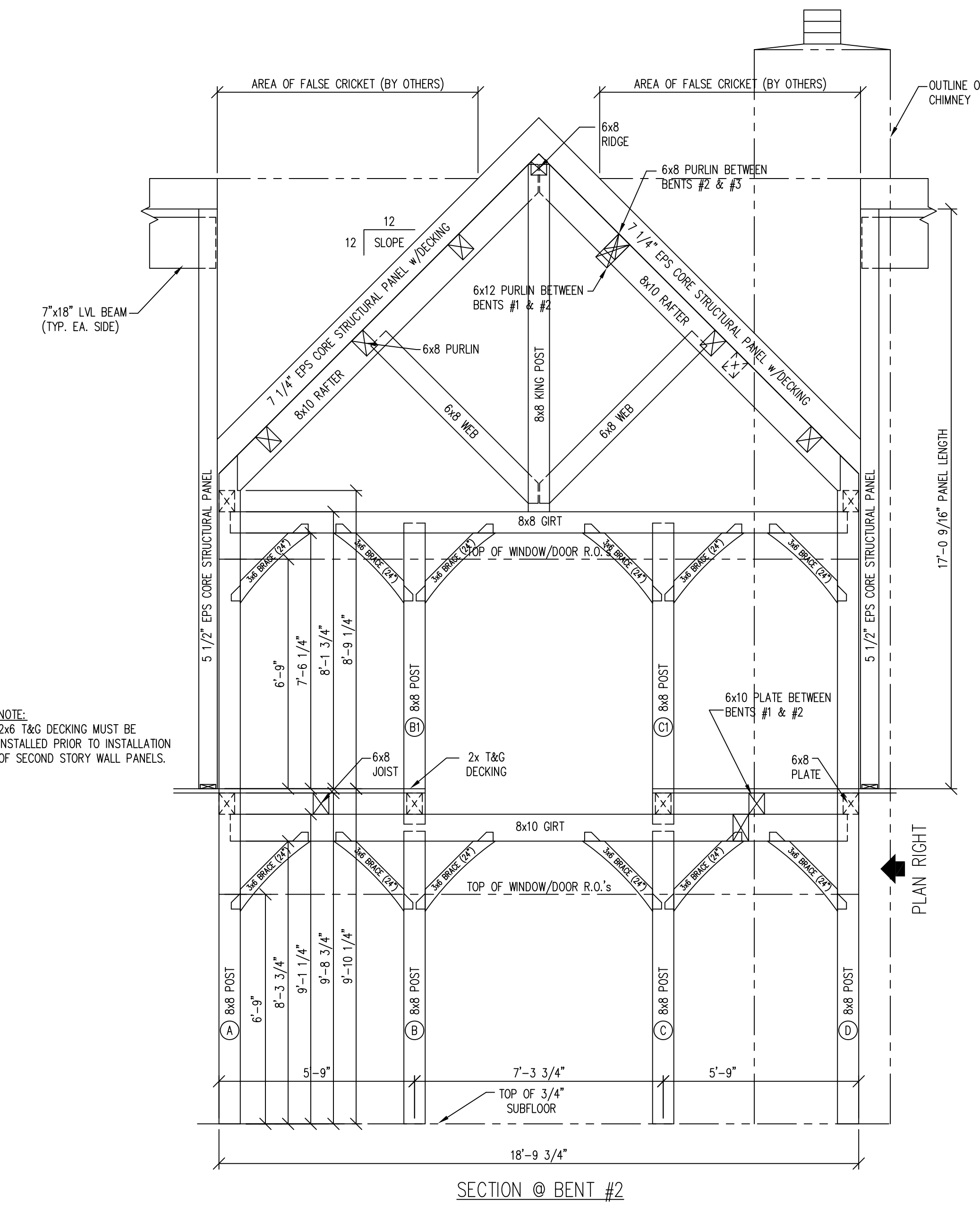
WORK TO DIMENSIONS - DO NOT SCALE PRINT		10/24/95 DS	
SCALE	3/8"=1'-0"	HEARTHSTONE, INC.	CUSTOMER
DATE	08/16/1995	1630 EAST HIGHWAY 25/70 DANDRIDGE, TENNESSEE 37725	Dan Robbie
DRAWN BY	DS	615 - 397 - 9425	Avery Co., NC
CHECKED BY	MODEL		
APPROVED BY		Custom	Cross Section Dwg. #1
			SALES ORDER NO. 3076
			JOB ORDER NO. 2723
			DRAWING NO. 00002613
			SHEET NO. 3



SECTION @ BENT #1



SECTION OF POST @ EA. SIDE OF FIREPLACE



SECTION @ BENT #2

NOTE:  
2x6 T&G DECKING MUST BE  
INSTALLED PRIOR TO INSTALLATION  
OF SECOND STORY WALL PANELS.

**BASEMENT**  
FOR SPECIFICS SEE FOUNDATION PLAN  
& SEE TIMBERFRAME DETAIL  
DWGS. NO.9931 &/OR NO. 9932

THE DESIGN REPRESENTED ON THIS PLAN IS INTENDED TO BE USED EXCLUSIVELY IN CONJUNCTION WITH THE CONSTRUCTION OF A STRUCTURE MANUFACTURED BY HEARTHSTONE, INC., AND IS NOT INTENDED FOR USE BY ANY OTHER MANUFACTURER OR BUILDING SYSTEM.

ALL RIGHTS RESERVED RESPECTING DESIGN AND SUBJECT SHOWN ON THIS DRAWING

HEARTHSTONE  
HOMES

WORK TO DIMENSIONS - DO NOT SCALE PRINT		DATE-LAST REVISION 10/4/95 DS	
SCALE	3/8"=1'-0"	HEARTHSTONE, INC.	CUSTOMER
DATE	08/16/1995	1630 EAST HIGHWAY 25/70 DANDRIDGE, TENNESSEE 37725	Dan Robbie
DRAWN BY	DS	615 - 397 - 9425	Avery Co., NC
CHECKED BY	DS	Custom	TITLE
APPROVED BY			Cross Section Dwg. #2
			SALES ORDER NO.
			3076
			JOB ORDER NO.
			2723
			DRAWING NO.
			00002614
			SHEET NO.
			4



LEFT ELEVATION



FRONT ELEVATION



RIGHT ELEVATION

NOTE:  
STAIRS & PROTECTIVE RAILING TO  
BE DESIGNED AND LOCATED BY  
OWNER/CONTRACTOR.



REAR ELEVATION

THE DESIGN REPRESENTED ON THIS PLAN IS INTENDED TO BE USED EXCLUSIVELY IN CONJUNCTION WITH THE CONSTRUCTION OF A STRUCTURE MANUFACTURED BY HEARTHSTONE, INC., AND IS NOT INTENDED FOR USE BY ANY OTHER MANUFACTURER OR BUILDING SYSTEM.

ALL RIGHTS RESERVED RESPECTING DESIGN AND SUBJECT SHOWN ON THIS DRAWING

HEARTHSTONE  
HOMES

WORK TO DIMENSIONS - DO NOT SCALE PRINT

SCALE 1/4"=1'-0"  
DATE 08/16/1995  
DRAWN BY DS  
CHECKED BY  
APPROVED BY

HEARTHSTONE, INC.  
1630 EAST HIGHWAY 25/70 DANDRIDGE, TENNESSEE 37725  
615 - 397 - 9425

CUSTOMER

Dan Robbie  
Avery Co., NC

TITLE

Elevations

DATE-LAST REVISION 04/95 DS

SALES ORDER NO. 3076  
JOB ORDER NO. 2723  
DRAWING NO. 00002616  
SHEET NO. 6